

**Baseline serum 25-hydroxy vitamin D is predictive of future glycaemic status and insulin resistance: The MRC Ely prospective study 1990 – 2000**

Nita G Forouhi<sup>1</sup>, PhD, FFPH, Jian'an Luan<sup>1</sup>, PhD, Andrew Cooper<sup>1</sup>, MSc, Barbara J Boucher<sup>2</sup>, MD, FRCP, Nicholas J Wareham<sup>1</sup>, PhD, FFPH

<sup>1</sup>MRC Epidemiology Unit, Institute of Metabolic Science, Cambridge

<sup>2</sup>Centre for Diabetes and Metabolic Medicine, Bart's & the London School of Medicine and Dentistry, London

**Corresponding author:**

Dr Nita Gandhi Forouhi  
MRC Epidemiology Unit  
Institute of Metabolic Science  
PO Box 285, Addenbrooke's Hospital  
Cambridge, CB2 0QQ

nf250@medschl.cam.ac.uk

Received 1 May 2008 and accepted 20 June 2008.

This is an uncopyedited electronic version of an article accepted for publication in *Diabetes*. The American Diabetes Association, publisher of *Diabetes*, is not responsible for any errors or omissions in this version of the manuscript or any version derived from it by third parties. The definitive publisher-authenticated version will be available in a future issue of *Diabetes* in print and online at <http://diabetes.diabetesjournals.org>.

**Objective:** Accumulating epidemiological evidence suggests that hypovitaminosis D may be associated with type 2 diabetes and related metabolic risks. However, prospective data using the biomarker serum 25-hydroxyvitamin D (25(OH)D) are limited and therefore examined in the present study.

*Research Design and Methods:* 524 randomly selected non-diabetic men and women aged 40-69 years at baseline with measurements for serum 25(OH)D and insulin-like growth factor-1 (IGF-1) in the population-based Ely Study had glycaemic status (oral glucose tolerance), lipids, insulin, anthropometry and blood pressure measured, and metabolic syndrome risk score (MS-z) derived at baseline and at 10-years of follow-up.

*Results:* Age-adjusted baseline mean serum 25(OH)D was greater in men (64.5 (95% CI 61.2-67.9) nmol/L) than women (57.2 (54.4,60.0) nmol/L) and varied with season (highest late summer). Baseline 25(OH)D was associated inversely with 10-year risk of hyperglycemia (fasting glucose: beta -0.0023, p=0.019; 2h-glucose: beta -0.0097, p=0.006), insulin resistance (fasting insulin beta -0.1467, p=0.010; HOMA-IR: beta -0.0059, p=0.005) and MS-z score (beta -0.0016, p=0.048) after adjustment for age, sex, smoking, BMI, season and baseline value of each metabolic outcome variable. Associations with 2h-glucose, insulin and HOMA-IR remained significant after further adjustment for IGF-1, parathyroid hormone, calcium, physical activity and social class.

*Conclusions:* This prospective study reports inverse associations between baseline serum 25(OH)D and future glycemia and insulin resistance. These associations are potentially important in understanding the etiology of abnormal glucose metabolism, and warrant investigation in larger specifically designed prospective studies and randomized controlled trials of supplementation.

Though the most well known role of vitamin D is the regulation of calcium absorption and bone metabolism, it is becoming clear that this hormone has pleiotropic effects with possible roles in the pathogenesis of cancer (1), cardiovascular disease (2), multiple sclerosis (3) and type 1 diabetes (4). Recent epidemiological evidence also points to a potential association of vitamin D insufficiency with adverse metabolic risk (5-9), including that for type 2 diabetes (10;11). While the exact mechanisms that underlie the multiple effects of vitamin D on different tissues are not currently understood, one unifying factor is the expression of vitamin D receptors (VDR) in more than 30 tissues including pancreatic islet cells (12). There is some evidence that polymorphisms in the VDR gene may be associated with insulin resistance, insulin secretion and fasting glucose concentrations (13-16), suggesting that vitamin D is likely to contribute to glucose metabolism (8). It is also becoming clear that there are physiological interactions between vitamin D, insulin-like growth factor (IGF-1) and its binding proteins IGFBP-1 and IGFBP-3 (17;18). Variations in circulating IGF-1 and its binding proteins are associated with variations in glycemia (19), and may interact with vitamin D status to influence metabolic syndrome risk (7).

Epidemiological studies examining vitamin D status and the risk of hyperglycemia or insulin resistance have thus far been suggestive of inverse associations, but inconclusive. Most studies that have used the biomarker serum 25-hydroxy vitamin D<sub>3</sub> (25(OH)D) concentration, generally recognized as a marker of human vitamin D status, have been cross-sectional in nature; hence the temporal sequence of associations is unclear. Need et al previously reported that lower serum 25(OH)D was associated with higher fasting glucose throughout the range of serum 25(OH)D measured, and most marked when

25(OH)D levels were below 40 nmol/l (20). Ford et al, in the NHANES-III study of 8421 men and women reported an inverse association between 25(OH)D and metabolic syndrome risk, particularly for hyperglycemia, hypertriglyceridaemia and abdominal obesity (6). Hypponen et al most recently reported, in the 1958 birth cohort study of 6810 men and women, that higher serum 25(OH)D was associated with lower risk of metabolic syndrome (odds ratio 0.33, 95% CI 0.26-0.42) and each of its individual components cross-sectionally, including an inverse association with HbA<sub>1c</sub> level as a marker of glucose status (7). They found an interaction between 25(OH)D and IGF-1 on metabolic risk, such that metabolic syndrome risk was lowest when both 25(OH)D and IGF-1 were highest. To our knowledge there has only been one previous prospective study of the association between serum 25(OH)D and the risk of type 2 diabetes, but the inverse association was attenuated and made non-significant after adjustment for confounders (21). There are no prospective studies, to the best of our knowledge, of the association between serum 25(OH)D and future continuous distribution of glycaemic status or insulin resistance. Several studies have examined the association of diabetes or metabolic syndrome risk with dietary and/or supplemental vitamin D intake (11;22;23), but this represents only a small proportion of vitamin D available in humans, especially in the UK where few foods are vitamin D fortified (e.g. margarine) or naturally rich in vitamin D (e.g. egg yolk and oily fish). The main source of vitamin D is from sunlight exposure of the skin where a narrow band of ultraviolet-B radiation converts its pre-hormone, endogenously, into vitamin D<sub>3</sub> in the skin while liver, kidneys and other activating tissues then hydroxylate it to form, respectively, 25(OH)D and 1,25-dihydroxyvitamin D<sub>3</sub> (calcitriol). There is general agreement that serum 25(OH)D

concentrations best reflect vitamin D repletion or 'status', current definitions being suggested to be 'sufficiency' (concentrations above 75 nmol/L or 30 µg/L), 'hypovitaminosis D' (<75 nmol/L or <30 µg/L), 'insufficiency' (<50 nmol/L or <20 µg/L) (12) as well as classical 'deficiency' (<25 nmol/l).

The aim of our study was to investigate the prospective association between serum 25(OH)D concentration and markers of metabolic risk including glucose, insulin, insulin resistance, and a continuous metabolic syndrome risk z-score. We further wanted to test whether any associations observed were independent of a comprehensive range of potential confounding or effect-modifying factors, including circulating IGF-1 or its binding proteins.

## **Research Design and Methods**

### **Study population**

The participants in this study are a sub-set of the Ely Study (Cambridgeshire, U.K.) which was established in 1990 as a prospective study; detailed methodology as described previously (24;25). In brief, from a sampling frame of all adults free of known diabetes registered with a single practice serving Ely, 1122 European origin adults aged 40-69 years were randomly selected (response rate 74%). The baseline examination took place between 1990 and 1992. Among those who were biochemically non-diabetic (n=1040) at baseline (26), follow-up examination occurred at a median of 4.5 years (when n=912 attended) and again at 10 years (when n=683 attended). Of the 683 with baseline and 10-year follow-up data, 524 participants had complete data for this analysis after exclusions (n=5 excluded with elevated plasma creatinine >150 µmol/l, n=126 missing blood samples for serum 25(OH) and IGF-1 assays and n=28 for other missing variables) and formed the present study population. All participants gave written informed consent and the study was

approved by the Local Research Ethics Committee.

### **Measurements**

At both the baseline (1990-92) and the 10-year (2000-03) health check visits, participants attended in the morning after an overnight fast. We performed anthropometric measurements to standard protocol (25), including waist circumference (cm), weight (kg), and height (m), and calculated body mass index (BMI; weight/square of height (kg/m<sup>2</sup>)). Blood pressure was measured using a standard protocol while seated (25). Venous plasma glucose was measured both fasting and 120 minutes after a 75g glucose load (oral glucose tolerance test (OGTT)), and analyzed in fresh samples using a hexokinase assay on blood collected into fluoridated tubes. All samples were cooled on ice, centrifuged into plasma/serum aliquots on-site, and stored at -70C within 4 hours of collection. Biochemical assays were carried out using frozen aliquots for lipids (fasting triglyceride and HDL-cholesterol) and fasting insulin. Plasma insulin was measured using two-site immunoassays with either <sup>125</sup>I or alkaline phosphatase labels and triglycerides with the RA1000 (Bayer Diagnostics, UK), using a standard automated enzymatic method. All samples (baseline and 10-year follow-up) were handled in the same manner and analyzed at Addenbrooke's Hospital clinical chemistry laboratory.

At baseline, fasting serum 25(OH)D concentration was measured by radioimmunoassay using acetonitrile extracts of serum. Intact serum parathyroid hormone (PTH) was measured using a two-site immunoradiometric assay with an N-terminal monoclonal antibody as capture. Total serum calcium concentration was measured using a modified ortho-cresolphthalein complexone reaction with 8-quinolinol to reduce magnesium interference, while serum albumin, measured with an adapted bromocresol purple dye-binding method, was

used to calculate corrected calcium. Serum creatinine was assayed using the alkaline picrate Jaffe reaction. Fasting plasma concentrations of IGF-1, IGFBP-1 and IGFBP-3 (insulin-like growth factor binding proteins) were measured by previously reported antibody based assays (27). All inter-assay coefficients of variation were less than 15%. Additionally, at baseline, information was collected by questionnaire on smoking habits, physical activity, and employment (25). We categorized these variables as never, ex or current smoker and manual or non-manual occupational social class respectively. Physical activity was described as a continuously distributed physical activity score obtained from the modified Paffenbarger questionnaire from which we computed estimates of energy expended in specific activities as the multiple of reported frequency and duration by the average energy cost of that activity from the Ainsworth energy expenditure compendium. The energy cost of activities is measured in METs or metabolic equivalent which is a means of expressing the energy expenditure of that activity relative to that of resting. The units of the resulting summary score summated over all reported activities are MET hours per day (28).

### Statistical methods

From the date of blood-draw we derived the season of measurement of serum 25(OH)D (April-September coded as spring/summer; October-March as autumn/winter). As sex-specific associations with outcomes were similar, and there was no interaction between sex and 25(OH)D, analyses were pooled for men and women. Four categories of 25(OH)D (created to reflect deficiency (<25 nmol/L), insufficiency (25-49.9 nmol/L), hypovitaminosis but not insufficiency (50-74.9 nmol/L) and sufficiency ( $\geq$ 75 nmol/L)) were used to examine the distribution of baseline parameters adjusted for age and sex. We tested differences in proportions by chi-

squared tests, and in linear trends for continuous traits across 25(OH)D categories using generalized linear models. For non-normally distributed variables (fasting insulin, triglycerides, IGFBP-1, PTH and HOMA-IR) we applied logarithmic transformations and examined geometric means and 95% confidence intervals.

The outcomes were continuous quantitative metabolic traits including fasting glucose, 2h glucose, and fasting insulin. Additionally, we calculated a marker of insulin-resistance in the form of the homeostasis model of assessment index (HOMA-IR) as (fasting insulin\*fasting glucose)/22.5 (29). We also derived a continuous metabolic syndrome risk z-score as the mean of the following five sex-specific standardized continuous indexes of : obesity (BMI + waist circumference /2), hypertension (systolic blood pressure + diastolic blood pressure /2), insulin resistance (fasting insulin), hyperglycemia (2-h plasma glucose) and dyslipidemia (inverted fasting HDL + fasting triglycerides /2) (30). We did not study the outcome of diabetes incidence *a priori*, as we had only 54 events by 10 years of follow-up among this cohort.

We used multiple linear regression to assess the relation between baseline circulating 25(OH)D (continuous) and metabolic status (continuous) at 10 year follow-up. We adjusted for the potential confounding variables, as determined *a priori*. Three models were constructed. Model 1 was adjusted for age, sex, smoking status, season, BMI and baseline status of the metabolic parameter being assessed as the outcome variable in the linear regression (for instance adjusting for fasting glucose at baseline when examining fasting glucose at 10-year follow-up). Model 2 was additionally adjusted for PTH level, corrected calcium, and IGF-1. Model 3 was additionally adjusted for physical activity score and for social class. The variables age, BMI, waist circumference and physical activity score were entered in all

models as continuous variables, while family history, sex, season, and smoking status were used as categorical variables. We tested for statistical interaction of 25(OH)D with BMI, IGF-1 and the IGF-1 binding proteins IGFBP-1 and IGFBP-3 by using product terms and likelihood ratio tests.

All statistical analyses were performed using Stata/SE 9.2 (Stata-Corp, College Station, Texas, USA). All p values were based on 2-sided tests. The cut-off for statistical significance was 0.05.

## **Results**

Among 524 initially non-diabetic participants with complete data at baseline and 10-year follow-up, there were 214 men and 310 women, with mean age 52.9 (SD 7.7) years at baseline. Serum 25(OH)D concentration was higher in men (mean (sd) 64.7 (27.3) nmol/L) as compared with women (57.1 (23.4) nmol/L,  $p=0.001$ ); the age and sex adjusted mean 25(OH)D concentration was 60.2 (25.3) nmol/L. Serum 25(OH)D was strongly related to the season in which it was measured, with the lowest levels found in early spring and highest in late summer in both men and women (Figure 1). For most ( $n=10$ ) months of the year serum 25(OH)D concentrations were  $<75$  nmol/L, and for four months of the year the mean concentration was  $<50$  nmol/L (i.e. in the hypovitaminosis D and insufficiency range respectively). Twenty nine participants (72% women) were vitamin D deficient (25(OH)D  $<25$  nmol/L).

Table 1 shows that at baseline, across categories of increasing serum 25(OH)D, there was a significantly greater proportion of men, and both systolic and diastolic blood pressure were lower. BMI was not significantly different across vitamin D categories, while waist circumference was lowest in the highest category of 25(OH)D. With increasing 25(OH)D there was a significant decrease in fasting glucose, fasting

insulin, HOMA-IR and MS-z-score, while there was an increase in IGF-1 levels and in both its binding proteins. Notably, serum PTH was significantly lower and serum calcium higher, across increasing categories of 25(OH)D.

Table 2 shows that baseline 25(OH)D was significantly inversely associated with 10-year risk of increase in fasting glucose, 2h-glucose, fasting insulin, HOMA-IR and MS-z-score in analyses adjusted for age, sex, smoking, BMI, season, and for the baseline status of the metabolic outcome variable (model 1). We did not find any significant association with lipids, blood pressure or with waist circumference, suggesting that the association with metabolic syndrome risk is driven largely by the glucose and insulin component. Additionally adjusting for IGF-1, PTH and calcium level (model 2) or including additional adjustment for physical activity score and social class (model 3), made no material difference to the associations between 25(OH)D and 2h glucose, fasting insulin and HOMA-IR, but the associations were attenuated, not abolished, for fasting glucose and MS-z-score. Per 25 nmol/L increase in serum 25(OH)D at baseline (which is equivalent to one SD of the 25(OH)D distribution) there was a decrease in 10-year follow-up of 0.05 mmol/L in fasting glucose, 0.25 mmol/L in 2h glucose, 4.2 pmol/L in fasting insulin, 0.16 unit in HOMA-IR and 0.05 units in MS-z-score, in adjusted analyses.

We found no significant association between baseline IGF-1 and 10 year continuously distributed quantitative metabolic trait outcomes. There was no interaction between baseline 25(OH)D and IGF-1 on any of the metabolic outcomes. When testing for the effect of IGF-1 binding proteins, we found a significant interaction between 25(OH)D and IGFBP-1 for the 10 year outcomes of fasting glucose ( $p=0.0005$ ) and 2h glucose ( $p=0.029$ ). There was also a

significant interaction between 25(OH)D and BMI on the risk for 10-year HOMA-IR ( $p=0.011$ ), but not for any other outcome. Figure 2 shows how the inverse association between follow-up fasting and 2h glucose was modified in participants with values of IGFBP-1 below and above the median (Fig 2 A-D). Thus the decreasing fasting or 2h glucose level across increasing categories of 25(OH)D was significant among those with below, but not above, median IGFBP-1. Figure 2 combines data for the two lowest categories of 25(OH)D, because of small numbers ( $n=29$ ) in the vitamin D deficient group, but the results are identical in magnitude and direction if four categories of vitamin D (as in table 1) are used instead of three as shown in Figure 2.

## **Discussion**

We report, using the Ely population-based prospective study, that baseline vitamin D status (serum 25-hydroxy vitamin D concentration) in non-diabetic participants is inversely associated with glucose status, insulin resistance and metabolic syndrome risk at 10 year follow-up. Among these individuals, higher baseline 25(OH)D was associated with significant decreases in 10 year follow-up 2h glucose, fasting insulin, homeostasis model assessment insulin resistance (HOMA) index and metabolic syndrome risk z-score in analyses adjusted for a comprehensive range of potential confounders and mediators. These findings appear to be novel, with no previous study we can find of prospective associations between baseline serum 25(OH)D and future risk of disturbed glucose metabolism or metabolic syndrome risk as assessed using continuous quantitative metabolic traits.

Our findings confirm previously reported cross-sectional observations; for instance, among 8421 US adults, those with metabolic syndrome had lower 25(OH)D concentration

(67.1 nmol/l) than those without (75.9 nmol/l) (6). Among 6810 Caucasians in the 1958 birth cohort, aged 45 years, serum 25(OH)D was associated inversely with metabolic syndrome risk cross-sectionally, with independent associations for high HbA1c, blood pressure and triglycerides after adjustment (7). Although we found an inverse association between baseline serum 25(OH)D and incident continuous metabolic syndrome risk z-score, we did not observe this association for individual components such as for blood pressure. The association of blood markers of vitamin D with blood pressure or hypertension is complex, and there are inconsistent findings ranging from no association to inverse or positive association (previously discussed by Scragg et al (31)). A recent study of association of plasma 25(OH)D with incident hypertension reported an inverse association, but study limitations included using predicted vitamin D levels and self-reported hypertension rather than actual measurement, in some of the included cohorts in that study (32). Notably, we did report a significant inverse association between serum 25(OH)D and each of systolic and diastolic blood pressure at baseline, but did not find this prospectively. Further study of such associations is warranted in larger cohorts.

While there was evidence of interaction between 25(OH)D and IGF-1 on metabolic syndrome risk in a previous study (metabolic syndrome risk being least when both 25(OH)D and IGF-1 were highest) (7), we found no such interaction for 10 year risk of metabolic syndrome measured as a continuous risk z-score, or for any individual metabolic component. We did find significant interaction between baseline IGFBP-1 and 25(OH)D on fasting and 2h glucose at 10 years when significantly lower glycemia with increasing 25(OH)D was found in those with low, but not high IGFBP-1. Notably, in the Ely cohort, we have previously reported interaction between IGF-1 and IGFBP-1 on

4.5 year follow-up 2h-glucose concentration; those with lower but not higher IGFBP-1 having decreasing concentrations of 2h-glucose with increasing tertiles of baseline IGF-1 (19). Since IGF-1 increases with 25(OH)D at baseline in our cohort, as in the 1958 birth cohort (7), this may explain our 4.5 year findings. Our present 10-year follow-up data suggest, as previously reported (17;18), that biological interactions between IGFBP-1 axis and 25(OH)D are potentially important in glucose homeostasis long term, and that IGF-1 axis and vitamin D axis interactions should be studied further. For example, IGFBP-1 concentrations may reflect variations in insulin secretion or hepatic insulin sensitivity, important components in glucose regulation (33).

Studies are emerging on vitamin D supplementation and gluco-metabolic risk. A post-hoc analysis within a trial designed for bone-health reported that calcium and vitamin D supplementation had no effect on fasting glucose or HOMA-IR over 3 years in 314 individuals (34). This study did, however, find that among those with impaired fasting glucose (but not with normoglycemia) there was a modest attenuation of the rise over time in fasting glucose and in HOMA-IR (p for treatment vs. placebo 0.042, 0.031 respectively) (34). That study measured serum 25(OH)D in a sub-set, which increased with intervention, but did not report on its associations with the metabolic outcomes. Since dietary intake, including supplementation, provides little vitamin D, sunlight exposure providing the major source through skin synthesis, it is important that further studies include assessment of individual vitamin D status (serum 25(OH)D concentration). A recent, larger, clinical trial of vitamin D plus calcium supplementation (400 IU and 1000 mg respectively daily versus placebo) in ~ 34,000 non-diabetic women (the Women's Health Initiative study), also included 2,020 women where

repeat measures of fasting glucose and fasting insulin were available (35). There was no significant effect of supplementation on these metabolic parameters at three or six years of follow-up. Notably, there was also no significant association with incident diabetes risk over 7 years (hazard ratio 1.01, 95% CI 0.94-1.10, with 2291 cases of incident type 2 diabetes). However, the independent effect of vitamin D could not be assessed as the supplementation was in combination with calcium, and, as the authors suggest, the dose of vitamin D given (400 IU) was modest and likely to be inadequate (35). Furthermore, since dietary intake is a poor source of vitamin D, compared to sunlight induced endogenous skin production, such studies require serum 25(OH)D data in addition, in at least a representative sub-sample.

What mechanisms may explain the associations of lower serum vitamin D status with risks of greater levels of glycemia and insulin resistance we have observed? Possibilities include direct effects of vitamin D on pancreatic beta cell secretory function through their nuclear vitamin D receptors (VDR), effects on insulin sensitivity through stimulation of insulin receptor expression, regulation of intra-cellular calcium since an effector part of the vitamin D pathway is the vitamin D-dependent calcium-binding protein required for post-insulin receptor effects in insulin-responsive tissues, and also indirect effects through inflammatory processes (36;37). Furthermore, inadequate vitamin D usually leads to increased serum parathyroid hormone, which in turn has been found to be inversely associated with insulin sensitivity in healthy adults (38). Finally, VDR gene polymorphisms have been associated with variation in insulin secretion among a British Bangladeshi south Asian population (14;16) and in glycemia amongst community based older American adults (39) and other gene polymorphisms may affect glucose metabolism, as recently reviewed (40).

Limitations of our study include that it was of modest size, and the included cohort with complete data comprised approximately 50% of the initial cohort, which could have potentially biased our results. However, when comparing baseline characteristics among included and excluded participants, included participants tended to be younger and healthier (lower blood pressure, lower BMI, lower fasting and 2h glucose and lower fasting insulin) than non-participants. This is in keeping with the frequently observed “healthy participant effect” in epidemiological studies, but if anything, would lead to a more conservative estimate of association. On an *a priori* basis we did not study association with clinical outcomes such as diabetes as we had inadequate statistical power (<20% power with 54 incident events of diabetes), but restricted our outcomes to continuous quantitative traits. While we could study association with future glucose concentration, we could not examine association with glycated haemoglobin, a longer term marker of glycaemic status, as we did not measure HbA1c at baseline in our study. Whilst we measured baseline serum 25(OH)D, we do not have data for sun exposure (including holidays in the sun), for supplement use, nor any interval measures of vitamin D status. We have, however, previously found remarkably close correlations between measures of vitamin D status for each month over 2-3 years in British South Asians from east London (unpublished data). Though stability of vitamin D status across the years is unknown for European Caucasians, as in our study, it is likely to be similar in view of the regularity of seasonal variations over time. Our findings, valid within a population of European Caucasians, cannot be extrapolated to other ethnic groups, given the previously reported heterogeneity by ethnicity (10). Despite these limitations, strengths of our study include the population based nature of the study, the use of a direct,

objective measure of vitamin D status, rather than relying on self-reported vitamin D intake or sunlight exposure, and the comprehensive range of quantitative metabolic markers (at baseline and at 10-year follow-up) including glucose measurement with oral glucose tolerance tests, fasting insulin, and derived markers of insulin resistance (HOMA-IR) and a continuous metabolic syndrome risk z-score. Furthermore, we have been able to adjust our analyses for a robust range of potential confounders and mediators including parathyroid hormone and calcium status (rarely included in other studies of such associations), as well as for smoking, physical activity, season, obesity, social class, age and gender which increases confidence in the independence of the observed associations. However, we acknowledge that residual confounding from measured and unmeasured factors cannot be excluded. Our data also demonstrate that mean serum 25(OH)D concentrations were < 75 nmol/L (hypovitaminosis D) for 10 months of the year and < 50 nmol/l for four months of the year (vitamin D insufficiency) in this cohort. There is evidence of a high prevalence of hypovitaminosis D worldwide (41) and our data are indicative of the chronically inadequate vitamin D repletion common to northern latitudes (42). This widespread problem, combined with our finding that higher vitamin D status (25-(OH)D) may have a beneficial effect on future gluco-metabolic risk profile raises a matter of public health importance deserving serious further investigation.

In conclusion, we have demonstrated inverse associations of baseline serum vitamin D concentration with future glucose levels and insulin resistance in a prospective population-based study, such that higher baseline vitamin D is associated with significantly lower future glucose, insulin and HOMA-IR. These associations are independent of risk factors and potential

confounders, and are potentially important in understanding the aetiology of metabolic disturbances associated with type 2 diabetes. Despite mounting evidence linking inadequate vitamin D repletion with abnormalities of glucose and insulin metabolism, the role of vitamin D is not fully understood and deserves further investigation both in larger specifically designed prospective studies and with randomized controlled trials of supplementation. Demonstration of a causal role for hypovitaminosis D in these disorders would lead to new targets for efforts to prevent type 2 diabetes at the population level and, possibly, for its treatment.

### **Acknowledgements**

The baseline and phase 2 of the Ely study were funded by Diabetes UK and the Eastern Region NHS R&D. Phase 3 of the Ely study was funded by the MRC. We are most grateful to all study participants and to the staff of the St. Mary's Street Surgery, Ely. We thank all the staff who worked on the study.

### **Role of funding source**

None of the study sponsors had a role in study design, in data collection, analysis or interpretation, in writing the report, or in the decision to submit for publication.

### **Conflict of interest**

All the authors confirm that there is no conflict of interest to declare.

## References

1. Garland,CF, Garland,FC, Gorham,ED, Lipkin,M, Newmark,H, Mohr,SB, Holick,MF: The role of vitamin D in cancer prevention. *Am J Public Health* 96:252-261, 2006
2. Wang,TJ, Pencina,MJ, Booth,SL, Jacques,PF, Ingelsson,E, Lanier,K, Benjamin,EJ, D'Agostino,RB, Wolf,M, Vasan,RS: Vitamin D Deficiency and Risk of Cardiovascular Disease. *Circulation* 2008
3. Munger,KL, Levin,LI, Hollis,BW, Howard,NS, Ascherio,A: Serum 25-hydroxyvitamin D levels and risk of multiple sclerosis. *JAMA* 296:2832-2838, 2006
4. Mathieu,C, Badenhoop,K: Vitamin D and type 1 diabetes mellitus: state of the art. *Trends Endocrinol Metab* 16:261-266, 2005
5. Chiu,KC, Chu,A, Go,VL, Saad,MF: Hypovitaminosis D is associated with insulin resistance and beta cell dysfunction. *Am J Clin Nutr* 79:820-825, 2004
6. Ford,ES, Ajani,UA, McGuire,LC, Liu,S: Concentrations of serum vitamin D and the metabolic syndrome among U.S. adults. *Diabetes Care* 28:1228-1230, 2005
7. Hypponen,E, Boucher,BJ, Berry,DJ, Power,C: 25-hydroxyvitamin D, insulin-like growth factor 1 and metabolic syndrome at age 45y: a cross-sectional study in the 1958 British birth cohort. *Diabetes* 57:298-305, 2008
8. Boucher,BJ, Mannan,N, Noonan,K, Hales,CN, Evans,SJW: Glucose intolerance and impairment of insulin secretion in relation to vitamin D deficiency in East London Asians. *Diabetologia* 38:1239-1245, 1995
9. Boucher,BJ: Inadequate vitamin D status: does it contribute to the disorders comprising syndrome 'X'? *Br J Nutr* 79:315-327, 1998
10. Scragg,R, Sowers,M, Bell,C: Serum 25-hydroxyvitamin D, diabetes, and ethnicity in the Third National Health and Nutrition Examination Survey. *Diabetes Care* 27:2813-2818, 2004
11. Pittas,AG, Lau,J, Hu,FB, Dawson-Hughes,B: The role of vitamin D and calcium in type 2 diabetes. A systematic review and meta-analysis. *J Clin Endocrinol Metab* 92:2017-2029, 2007
12. Zittermann,A: Vitamin D in preventive medicine: are we ignoring the evidence? *Br J Nutr* 89:552-572, 2003
13. Chiu,KC, Chuang,LM, Yoon,C: The vitamin D receptor polymorphism in the translation initiation codon is a risk factor for insulin resistance in glucose tolerant Caucasians. *BMC Med Genet* 2:2, 2001
14. Ogunkolade,BW, Boucher,BJ, Prahll,JM, Bustin,SA, Burrin,JM, Noonan,K, North,BV, Mannan,N, McDermott,MF, DeLuca,HF, Hitman,GA: Vitamin D receptor (VDR) mRNA and VDR protein levels in relation to vitamin D status, insulin secretory capacity, and VDR genotype in Bangladeshi Asians. *Diabetes* 51:2294-2300, 2002
15. Ortlepp,JR, Metrikat,J, Albrecht,M, von,KA, Hanrath,P, Hoffmann,R: The vitamin D receptor gene variant and physical activity predicts fasting glucose levels in healthy young men. *Diabet Med* 20:451-454, 2003
16. Hitman,GA, Mannan,N, McDermott,MF, Aganna,E, Ogunkolade,BW, Hales,CN, Boucher,BJ: Vitamin D receptor gene polymorphisms influence insulin secretion in Bangladeshi Asians. *Diabetes* 47:688-690, 1998

17. Gomez, JM, Maravall, FJ, Gomez, N, Navarro, MA, Casamitjana, R, Soler, J: Relationship between 25-(OH) D<sub>3</sub>, the IGF-I system, leptin, anthropometric and body composition variables in a healthy, randomly selected population. *Horm Metab Res* 36:48-53, 2004
18. Gomez, JM: The role of insulin-like growth factor I components in the regulation of vitamin D. *Curr Pharm Biotechnol* 7:125-132, 2006
19. Sandhu, MS, Heald, AH, Gibson, JM, Cruickshank, JK, Dunger, DB, Wareham, NJ: Circulating concentrations of insulin-like growth factor-I and development of glucose intolerance: a prospective observational study. *Lancet* 359:1740-1745, 2002
20. Need, AG, O'loughlin, PD, Horowitz, M, Nordin, BE: Relationship between fasting serum glucose, age, body mass index and serum 25 hydroxyvitamin D in postmenopausal women. *Clin Endocrinol (Oxf)* 62:738-741, 2005
21. Mattila, C, Knekt, P, Mannisto, S, Rissanen, H, Laaksonen, MA, Montonen, J, Reunanen, A: Serum 25-hydroxyvitamin D concentration and subsequent risk of type 2 diabetes. *Diabetes Care* 30:2569-2570, 2007
22. Pittas, AG, Dawson-Hughes, B, Li, T, van Dam, RM, Willett, WC, Manson, JE, Hu, FB: Vitamin D and calcium intake in relation to type 2 diabetes in women. *Diabetes Care* 29:650-656, 2006
23. de Boer, I, Tinker, LF, Connelly, S, Curb, JD, Howard, BV, Kestenbaum, B, Larson, JC, Manson, JE, Margolis, KL, Siscovick, DS, Weiss, NS: Calcium plus vitamin D supplementation and the risk of incident diabetes mellitus in the Women's Health Initiative. *Diabetes Care* 2008
24. Wareham, NJ, Byrne, CD, Williams, R, Day, NE, Hales, CN: Fasting proinsulin concentrations predict the development of type 2 diabetes. *Diabetes Care* 22:262-270, 1999
25. Williams, DR, Wareham, NJ, Brown, DC, Byrne, CD, Clark, PM, Cox, BD, Cox, LJ, Day, NE, Hales, CN, Palmer, CR, .: Undiagnosed glucose intolerance in the community: the Isle of Ely Diabetes Project. *Diabet Med* 12:30-35, 1995
26. World Health Organization. Definition, Diagnosis and Classification of Diabetes Mellitus. Part 1: Diagnosis and Classification of Diabetes Mellitus. 1999. Geneva, WHO.
27. Heald, AH, Cruickshank, JK, Riste, LK, Cade, JE, Anderson, S, Greenhalgh, A, Sampayo, J, Taylor, W, Fraser, W, White, A, Gibson, JM: Close relation of fasting insulin-like growth factor binding protein-1 (IGFBP-1) with glucose tolerance and cardiovascular risk in two populations. *Diabetologia* 44:333-339, 2001
28. Ainsworth, BE, Haskell, WL, Leon, AS, Jacobs, DR, Jr., Montoye, HJ, Sallis, JF, Paffenbarger, RS, Jr.: Compendium of physical activities: classification of energy costs of human physical activities. *Med Sci Sports Exerc* 25:71-80, 1993
29. Matthews, DR, Hosker, JP, Rudenski, AS, Naylor, BA, Treacher, DF, Turner, RC: Homeostasis model assessment: insulin resistance and beta-cell function from fasting plasma glucose and insulin concentrations in man. *Diabetologia* 28:412-419, 1985
30. Franks, PW, Ekelund, U, Brage, S, Wong, MY, Wareham, NJ: Does the association of habitual physical activity with the metabolic syndrome differ by level of cardiorespiratory fitness? *Diabetes Care* 27:1187-1193, 2004
31. Scragg R: Sunlight, vitamin D and cardiovascular disease. In *Calcium-regulating hormones and cardiovascular function*. Crass MF, Avioli LV, Eds. Boca Raton, CRC Press, 1994, p. 213-237
32. Forman, JP, Giovannucci, E, Holmes, MD, Bischoff-Ferrari, HA, Tworoger, SS, Willett, WC, Curhan, GC: Plasma 25-hydroxyvitamin D levels and risk of incident hypertension. *Hypertension* 49:1063-1069, 2007

33. Cruickshank,JK, Heald,AH, Anderson,S, Cade,JE, Sampayo,J, Riste,LK, Greenhalgh,A, Taylor,W, Fraser,W, White,A, Gibson,JM: Epidemiology of the insulin-like growth factor system in three ethnic groups. *Am J Epidemiol* 154:504-513, 2001
34. Pittas,AG, Harris,SS, Stark,PC, Dawson-Hughes,B: The Effects of Calcium and Vitamin D Supplementation on Blood Glucose and Markers of Inflammation in Non-diabetic Adults. *Diabetes Care* 30:980-986, 2007
35. de Boer,IH, Tinker,LF, Connelly,S, Curb,JD, Howard,BV, Kestenbaum,B, Larson,JC, Manson,JE, Margolis,KL, Siscovick,DS, Weiss,NS: Calcium plus vitamin D supplementation and the risk of incident diabetes in the Women's Health Initiative. *Diabetes Care* 31:701-707, 2008
36. Tai,K, Need,AG, Horowitz,M, Chapman,IM: Vitamin D, glucose, insulin, and insulin sensitivity. *Nutrition* 24:279-285, 2008
37. Timms,PM, Mannan,N, Hitman,GA, Noonan,K, Mills,PG, Syndercombe-Court, Aganna,E, Price,CP, Boucher,BJ: Circulating MMP9, vitamin D and variation in the TIMP-1 response with VDR genotype: mechanisms for inflammatory damage in chronic disorders? *QJM* 95:787-796, 2002
38. Chiu,KC, Chuang,LM, Lee,NP, Ryu,JM, McGullam,JL, Tsai,GP, Saad,MF: Insulin sensitivity is inversely correlated with plasma intact parathyroid hormone level. *Metabolism* 49:1501-1505, 2000
39. Oh,JY, Barrett-Connor,E: Association between vitamin D receptor polymorphism and type 2 diabetes or metabolic syndrome in community-dwelling older adults: the Rancho Bernardo Study. *Metabolism* 51:356-359, 2002
40. Palomer,X, Gonzalez-Clemente,JM, Blanco-Vaca,F, Mauricio,D: Role of vitamin D in the pathogenesis of type 2 diabetes mellitus. *Diabetes Obes Metab* 10:185-197, 2008
41. Holick,MF: Vitamin D deficiency. *N Engl J Med* 357:266-281, 2007
42. Webb,AR, Kline,L, Holick,MF: Influence of season and latitude on the cutaneous synthesis of vitamin D<sub>3</sub>: exposure to winter sunlight in Boston and Edmonton will not promote vitamin D<sub>3</sub> synthesis in human skin. *J Clin Endocrinol Metab* 67:373-378, 1988

	Serum 25-hydroxy vitamin D categories at baseline				p-value
	<25 nmol/L (n=29)	25-49.9 nmol/L (n=155)	50-74.9 nmol/L (n=219)	>=75 nmol/L (n=121)	
	50	52	53.5	53.7	
Age (years)	(47.2,52.8)	(50.8,53.2)	(52.5,54.5)	(52.3,55.1)	0.007
Women, n(%)	21 (72.4)	106 (68.4)	128 (58.5)	55 (45.5)	0.001
Family history of diabetes, n(%)	5 (17.2)	27 (17.4)	35 (16.0)	14 (11.6)	0.578
Smoking former, n(%)	10 (34.5)	32 (20.6)	66 (30.1)	44 (36.4)	
current, n(%)	4 (13.8)	32 (20.6)	33 (15.1)	25 (20.7)	0.058
Social class – manual, n(%)	13 (44.8)	55 (35.5)	78 (35.6)	51 (42.1)	0.446
BMI (Kg/m <sup>2</sup> )	24.6 (23.3,25.9)	25.7 (25.1,26.3)	25.5 (25,25.9)	25.0 (24.3,25.6)	0.449
Waist circumference (cm)	80.9 (77.6,84.2)	83.9 (82.5,85.4)	81.9 (80.7,83.1)	80.1 (78.5,81.7)	0.010
Systolic BP (mm Hg)	130.7 (124.9,136.5)	129.4 (126.8,131.9)	127.3 (125.2,129.5)	122.8 (119.8,125.74)	0.0008
Diastolic BP (mm Hg)	78.8 (75.2,82.5)	79.1 (77.5,80.7)	77.8 (76.5,79.2)	74.73 (72.85,76.61)	0.002
Total MET hours per day score	12.5 (8.4,16.6)	12.2 (10.5,13.9)	14 (12.5,15.4)	14.4 (12.5,16.4)	0.090
IGF-1	148.6 (129,168.2)	147.5 (139,156)	165.9 (158.8,173)	161.7 (152,171.3)	0.013
IGFBP-1*	20.7 (16.3,26.4)	22.5 (20.2,25)	24.2 (22.1,26.4)	25.2 (22.4,28.4)	0.075
IGFBP-3	3.81 (3.53,4.1)	3.81 (3.69,3.94)	3.94 (3.84,4.05)	3.98 (3.84,4.13)	0.059
Fasting glucose (mmol/L)	5.72 (5.55,5.9)	5.69 (5.62,5.77)	5.66 (5.6,5.73)	5.57 (5.49,5.66)	0.036
2h glucose (mmol/L)	5.85 (5.32,6.37)	6.16 (5.93,6.39)	6.02 (5.83,6.21)	6.14 (5.89,6.4)	0.754
Fasting plasma insulin* (pmol/L)	45.1 (37.4,54.4)	39.8 (36.7,43.2)	37.9 (35.4,40.6)	33.5 (30.6,36.8)	0.001
Total cholesterol (mmol/L)	6.43 (6.01,6.85)	6.4 (6.22,6.59)	6.46 (6.3,6.61)	6.52 (6.31,6.72)	0.466
HDL-cholesterol (mmol/L)	1.5 (1.37,1.62)	1.43 (1.38,1.49)	1.52 (1.48,1.57)	1.51 (1.45,1.57)	0.098
Fasting triglyceride* (mmol/L)	1.16 (0.99,1.37)	1.17 (1.09,1.25)	1.1 (1.03,1.16)	1.12 (1.03,1.21)	0.343

*Vitamin D status, hyperglycemia and insulin resistance*

HOMA-insulin resistance index*	1.64 (1.35,2)	1.44 (1.32,1.57)	1.37 (1.27,1.47)	1.19 (1.08,1.31)	0.0007
Metabolic syndrome risk z-score	0.04 (0.18,0.25)	(- 0.11 (0.02,0.21)	-0.01 (0.09,0.07)	(- -0.13 (-0.24,- 0.02)	0.003
PTH*^ (ug/L)	37.7 (32.6,43.5)	30.2 (28.4,32.2)	26.6 (25.2,28)	24.3 (22.7,26.1)	1.5E- 09
Calcium (mmol/L)	2.12 (2.08,2.16)	2.11 (2.09,2.12)	2.13 (2.12,2.15)	2.15 (2.13,2.17)	0.008

Table 1: Age and sex adjusted baseline characteristics by categories of baseline serum 25-hydroxy vitamin D: The Ely Study 1990-2000.

Data are number(%), arithmetic or \*geometric mean (95%CI) adjusted for age and sex (except age, adjusted for sex only). P-values are the test for proportions for categorical variables, or the test for linear trend for continuous traits. ^PTH = parathyroid hormone.

Table 2: Multiple linear regression analysis of the association between baseline serum 25-hydroxy vitamin D (nmol/L) and 10-year follow-up metabolic syndrome outcomes, The Ely Study 1990-2000.

Outcome per unit increase in baseline 25(OH)D	Model 1		Model 2		Model 3	
	Beta(95% CI)	p-value	Beta(95% CI)	p-value	Beta(95% CI)	p-value
Fasting glucose (mmol/l)	-0.0023(-0.004,-0.0004)	0.019	-0.0018(-0.004,0.0002)	0.082	-0.0019(-0.004,0.0002)	0.074
2h glucose (mmol/l)	-0.0097(-0.017,-0.003)	0.006	-0.0094(-0.017,-0.002)	0.011	-0.01(-0.018,-0.002)	0.013
Fasting insulin (pmol/L)	-0.1467(-0.258,-0.035)	0.010	-0.1447(-0.261,-0.028)	0.015	-0.1682(-0.3,-0.037)	0.012
Fasting triglyceride (mmol/l)	-0.0009(-0.003,0.002)	0.47	-0.0008(-0.003,0.002)	0.52	-0.0009(-0.003,0.002)	0.47
HDL-cholesterol (mmol/l)	0.0004(-0.0005,0.001)	0.38	0.0004(-0.001,0.001)	0.40	0.0004(-0.001,0.001)	0.49
Diastolic BP (mm Hg)	0.0005(-0.031,0.032)	0.98	0.0016(-0.031,0.034)	0.92	-0.0001(-0.036,0.036)	1
Systolic BP (mm Hg)	-0.0006(-0.051,0.05)	0.98	0.0023(-0.05,0.055)	0.93	-0.0067(-0.065,0.052)	0.82
Waist circumference (cm)	0.0028(-0.023,0.028)	0.83	0.0062(-0.02,0.033)	0.65	0.015(-0.013,0.043)	0.3
HOMA-IR* index	-0.0059(-0.01,-0.002)	0.005	-0.0055(-0.01,-0.001)	0.01	-0.0063(-0.011,-0.002)	0.009
Met-S risk z-score	-0.0016(-0.003,-0.00001)	0.048	-0.0015(-0.003,0.0002)	0.075	-0.0018(-0.004,0.0001)	0.06

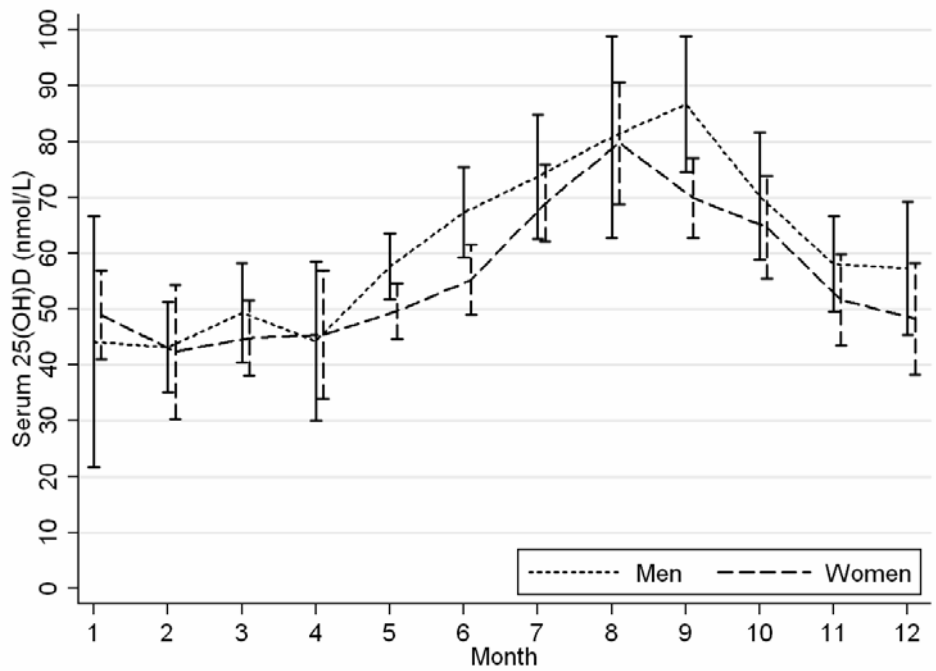
\*HOMA-IR: homeostasis model insulin resistance index

Model 1: adjusted for baseline outcome variable, age, sex, smoking status, season and BMI;

Model 2: adjusted as in model 1 plus PTH, calcium and IGF-1;

Model 3: adjusted as in model 2 plus physical activity score and occupational social class.

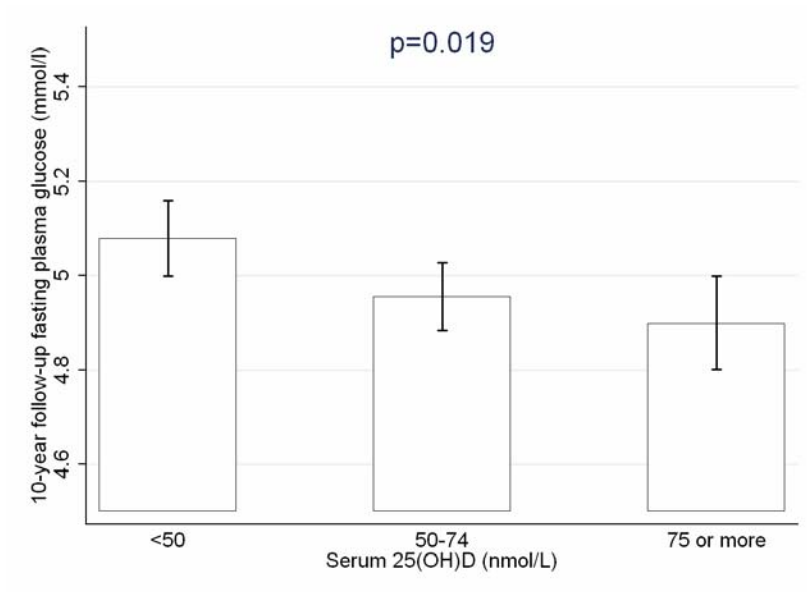
Figure 1:



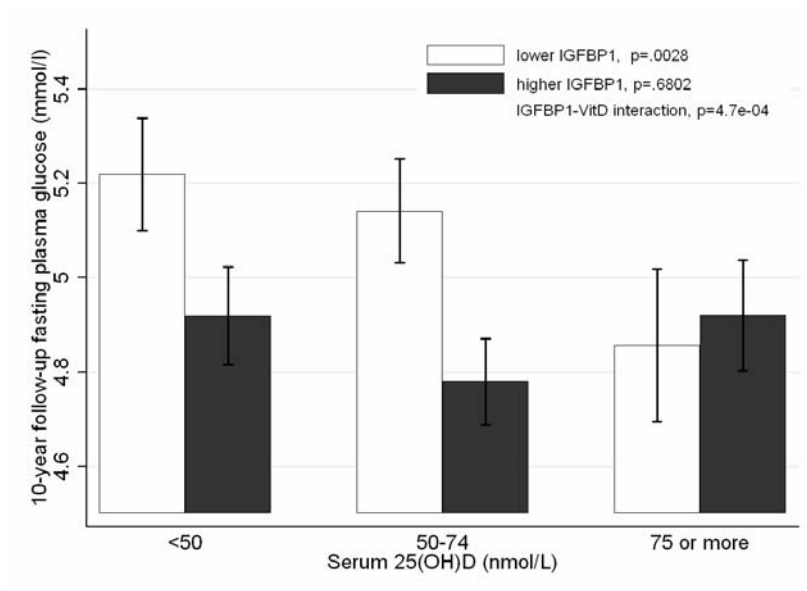
**Figure 1.** The distribution of serum 25-hydroxy vitamin D by month in men (solid line) and women (broken line) in the Ely study. Vertical lines are the 95% confidence intervals around the mean values at each month point. Month 1 represents January, while month 12 represents December.

Figure 2:

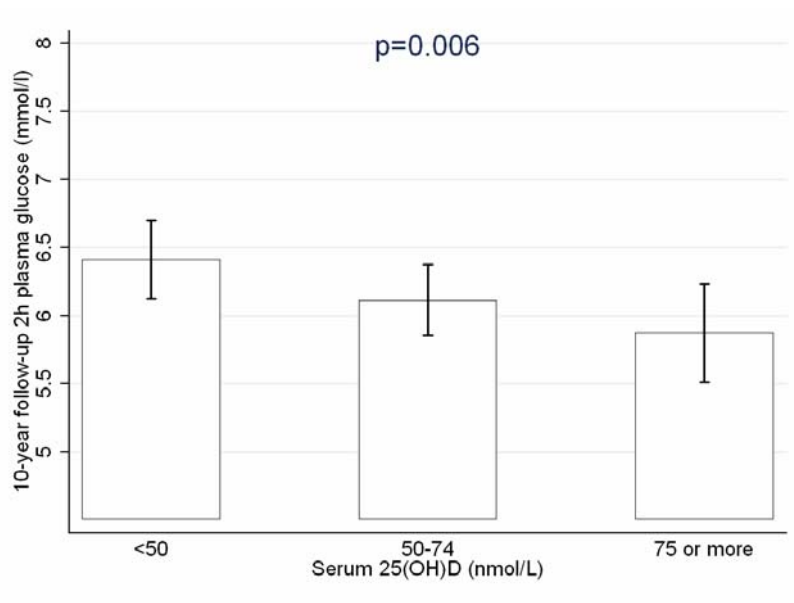
(A)



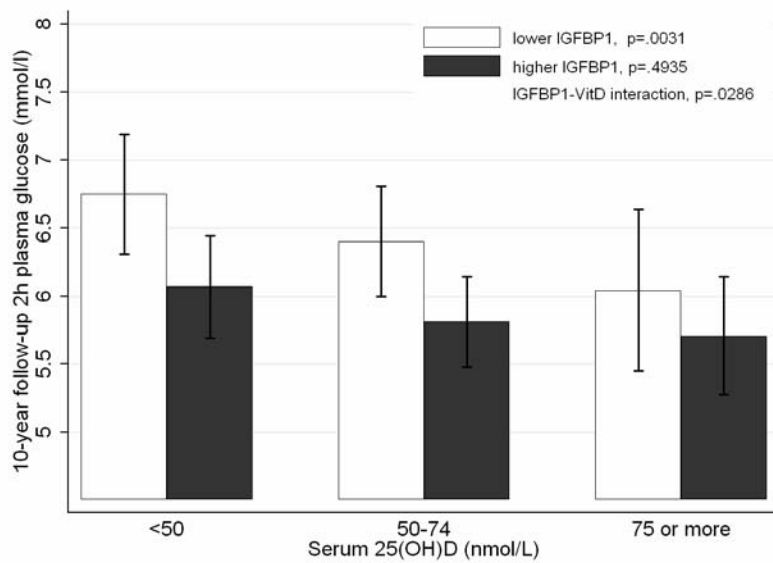
(B)



(C)



(D)



**Figure 2.** Association between baseline serum 25-hydroxy vitamin D and 10-year follow-up fasting glucose (panels A and B), and 2h glucose (panels C and D). Panels A and C demonstrate association in the entire cohort; panels B and D show that the association was modified in participants with below and above median values of IGFBP-1. The MRC Ely study 1990-2000.