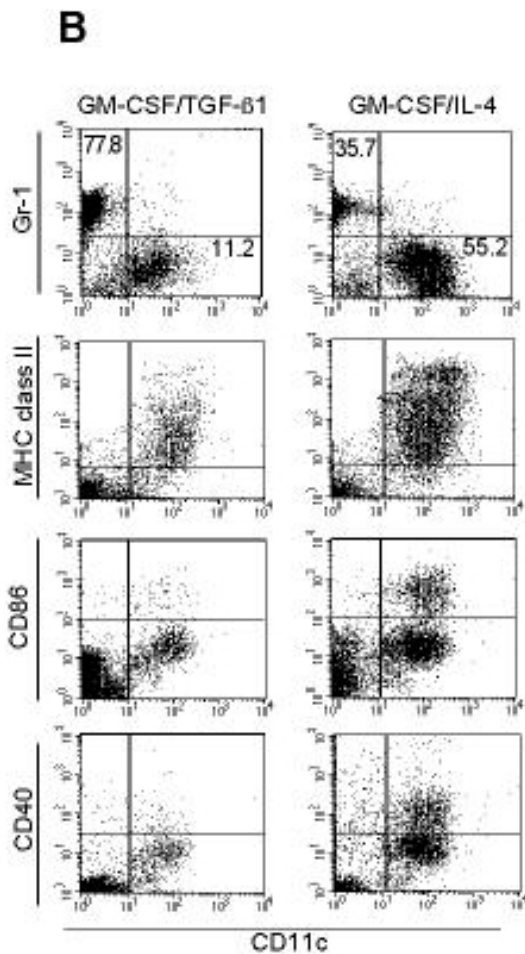


## Figure 2 B, C, D



*Figure Legend: Undifferentiated myeloid cells are abundant in GM-CSF/TGF- $\beta$ 1 cultured BM*

(B) BM was cultured in GM-CSF/TGF- $\beta$ 1 or GM-CSF/IL-4, cells harvested at day 5 and cell surface markers analysed by flow cytometry. Numbers denote the percentage of cells falling in that quadrant.

(C&D) GM-CSF/IL-4 or GM-CSF/TGF- $\beta$ 1 cultured BM was harvested at day 5 and endocytic activity measured by uptake of FITC-dextran.

(C) FITC-dextran uptake vs CD86 expression for CD11c-gated cells from GM-CSF/IL-4 cultured BM.

(D) FITC-dextran uptake vs CD11c expression for bulk GM-CSF/TGF- $\beta$ 1

