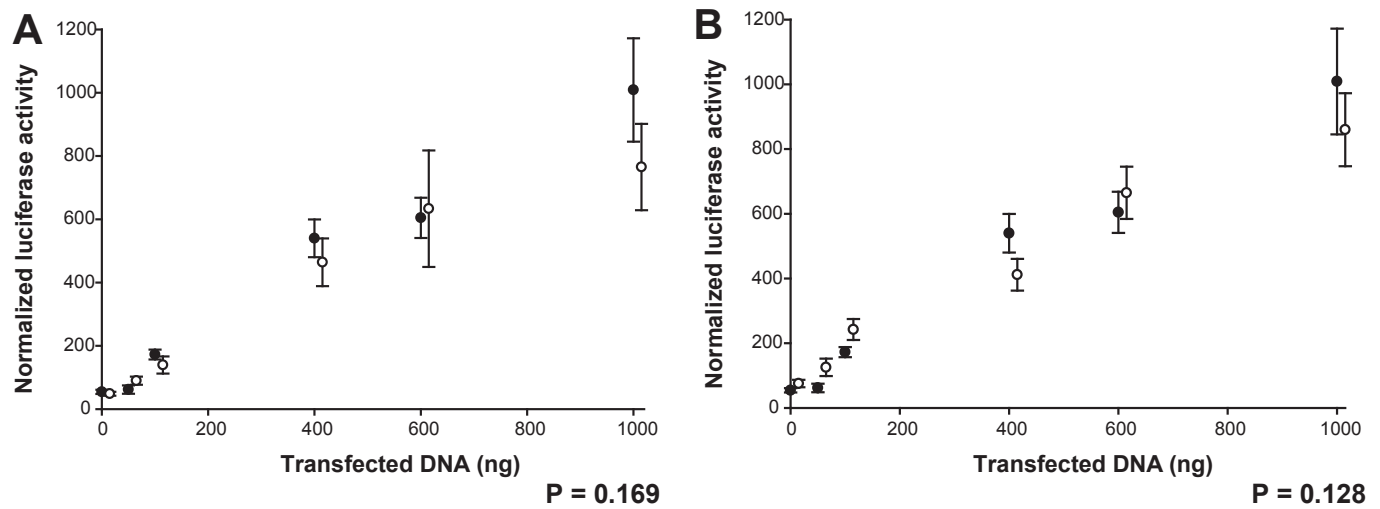


Supplement 4



Transcriptional activation by the P2 promoter sequence variants measured as luciferase activity generated from reporter constructs transfected into rat insulinoma cells (INS-1 cells). Solid circles denote wild type activity, open circles denote the activity of the sequence variants. Standard error bars are shown. Panel A shows the transactivation profiles obtained for the sequence variant, P2 -192C>G compared to the profile of the wild type using a range of template concentrations. Panel B shows the transactivation profiles obtained for the sequence variant P2 -50G>C compared to the profile of the wild type. Notably, the median coefficient of variation was high (54 %, range 35-113 %) for the assay.