

Appendix

Figure Legends Appendix

Figure 1. Expression of surface markers GITR, CTLA-4, and CD62L by NOD CD4⁺CD25⁺ cells. Spleen cells from pre-diabetic (A) or Sick (B) NOD mice were collected and labeled for CD4, CD25 and either GITR, CTLA-4, or CD62L. CD4⁺CD25⁺ cells were gated and analyzed for expression of surface markers by FACS[®].

Figure 2. Pre and post purification histograms for CD90⁺ and CD4⁺CD25⁻ cells. Spleen cells were separated into the CD90⁻ and CD90⁺ fractions, and labeled for CD3. Most purified CD90⁺ cells are CD3⁺ (A). In some cases, CD90⁺ cells were also depleted of CD25⁺ cells and pre and post depletion histograms are shown (B).

Figure 1 Appendix

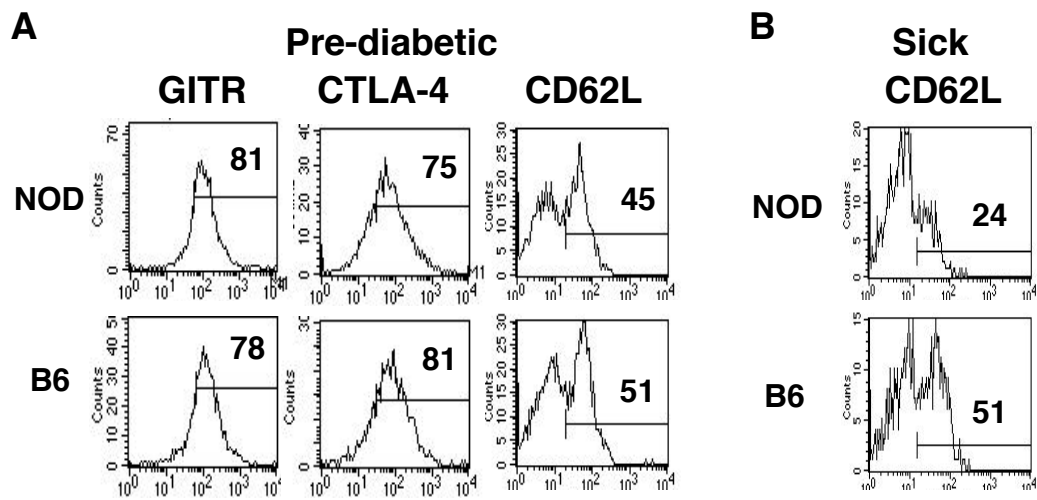


Figure 2 Appendix

