

Insulin and Leptin Acutely Regulate Cholesterol Ester Metabolism in Macrophages by Novel Signaling Pathways

Lisa O'Rourke,¹ Steven J. Yeaman,² and Peter R. Shepherd¹

Leptin is produced in adipose tissue and acts in the hypothalamus to regulate food intake. However, recent evidence also indicates a potential for direct roles for leptin in peripheral tissues, including those of the immune system. In this study, we provide direct evidence that macrophages are a target tissue for leptin. We found that J774.2 macrophages express the functional long form of the leptin receptor (Obrb) and that this becomes tyrosine-phosphorylated after stimulation with low doses of leptin. Leptin also stimulates both phosphoinositide 3-kinase (PI 3-kinase) activity and tyrosine phosphorylation of JAK2 and STAT3 in these cells. We investigated the effects of leptin on hormone-sensitive lipase (HSL), which acts as a neutral cholesterol esterase in macrophages and is a rate-limiting step in cholesterol ester breakdown. Leptin significantly increased HSL activity in J774.2 macrophages, and these effects were additive with the effects of cAMP and were blocked by PI 3-kinase inhibitors. Conversely, insulin inhibited HSL in macrophages, but unlike adipocytes, this effect did not require PI 3-kinase. These results indicate that leptin and insulin regulate cholesterol-ester homeostasis in macrophages and, therefore, defects in this process caused by leptin and/or insulin resistance could contribute to the increased incidence of atherosclerosis found associated with obesity and type 2 diabetes. *Diabetes* 50:955–961, 2001

Obesity and insulin resistance are major contributory factors in premature death in the Western world, and these conditions are characterized by increased circulating levels of insulin (1) and leptin (2,3). Disturbances in lipid metabolism are characteristic features of insulin resistance and diabetes (4), and these are closely associated with the increased risk of atherosclerotic heart disease in individuals with

these conditions (5). A key step in the development of atherosclerosis is the deposition of cholesterol ester-filled macrophage foam cells, which contribute to the formation of atherosclerotic plaques (6,7). Hormone-sensitive lipase (HSL) has neutral cholesterol esterase (nCE) activity, and this role of HSL in vivo is highlighted by the finding that targeted disruption of the HSL gene ablates nCE activity in most tissues (8). Although the knockout of the HSL gene does not remove all nCE activity from macrophages, there is now strong evidence that HSL is the enzyme responsible for a large proportion of nCE activity in these cells under normal conditions (6,9–14). Because HSL is involved in breakdown of cholesterol ester in macrophages, defects in the regulation of HSL could potentially promote formation of foam cells.

Regulation of HSL is best understood in adipocytes, where agents that increase cAMP activate lipolysis and where insulin counters this effect (15). The regulation of lipolysis in adipose tissue involves the coordinate regulation of HSL activity (15), subcellular localization of HSL, and subcellular localization of the lipid-coating protein perilipin (16). It also may involve interactions with associated proteins such as fatty acid-binding protein (17) and the docking protein lipotransin (18). More recently, there have been reports that leptin stimulates lipolysis in adipocytes (19–21), although it is not known whether this involves changes in HSL activity. The effects of leptin and insulin on HSL activity have not been investigated in macrophages; clearly, however, if leptin and insulin affect HSL activity in macrophages, they could play a role in regulating deposition of cholesterol ester and formation of foam cells. In the current study, we found that insulin acutely downregulates HSL activity in macrophages, whereas leptin stimulates the activity. We also found that the J774.2 macrophages possess the molecular machinery required to respond to leptin stimulation. They express high levels of the long form of the leptin receptor, and physiological concentrations of leptin stimulate intracellular signaling pathways known to be downstream of this receptor. Surprisingly, although both insulin and leptin activate phosphoinositide 3-kinase (PI 3-kinase) in macrophages, the attenuation of HSL by insulin was not blocked by wortmannin, but the stimulatory effects of leptin were blocked. These results identify new mechanisms by which leptin and insulin regulate HSL in macrophages and suggest that leptin and insulin may play direct roles in regulating formation of foam cells.

From the ¹Department of Biochemistry and Molecular Biology, University College London, London; and the ²School of Biochemistry and Genetics, University of Newcastle-upon-Tyne, Newcastle-upon-Tyne, U.K.

Address correspondence and reprint requests to Peter R. Shepherd, PhD, Department of Biochemistry and Molecular Biology, University College London, Gower Street, London, WC1E 6BT, U.K. E-mail: p.shepherd@biochem.ucl.ac.uk.

Received for publication 22 August 2000 and accepted in revised form 14 December 2000.

BSA, bovine serum albumin; CPT-cAMP, 8-(4-chlorophenylthio)-adenosine 3':5'-cyclic monophosphate; DMEM, Dulbecco's modified Eagle's medium; HSL, hormone-sensitive lipase; nCE, neutral cholesterol esterase; PDE, phosphodiesterase; PI 3-kinase, phosphoinositide 3-kinase; PKA, protein kinase A; PKB, protein kinase B.

RESEARCH DESIGN AND METHODS

[125 I]-Protein A and cholesterol 1- $[^{14}$ C]-oleate were obtained from Amersham-Pharmacia (Uppsala, Sweden). RPMI-1640 and newborn calf serum were obtained from Gibco-BRL (Gaithersburg, MD). Fetal calf serum, Dulbecco's modified Eagle's medium (DMEM), and 8-(4-chlorophenylthio)-adenosine 3':5'-cyclic monophosphate (CPT-cAMP) were obtained from Sigma Chemical (Poole, Dorset, U.K.). Anti-phosphotyrosine antibody, PY99, was obtained from Santa Cruz Biochemicals (Santa Cruz, CA), anti-phosphoSTAT3 was obtained from New England Biolabs (Beverly, MA), and anti-HSL antibody raised against a segment of rat HSL corresponding to amino acids 399–608 was kindly supplied by Dr. Raj Beri, of Astra Zeneca (Macclesfield, U.K.). Rabbit polyclonal antibody raised to amino acids 541–840 of the human leptin receptor was obtained from Santa Cruz Biochemicals (sc8325) and recognized all forms of the leptin receptor. Polyclonal ObRb-specific antibodies raised to amino acids 1075–1174 of the murine leptin receptor and polyclonal JAK2 antibodies were supplied by Dr. Martin Myers of the Joslin Diabetes Center (Boston, MA) (22). Phosphodiesterase 3B (PDE3B) antibodies were supplied by Dr. Ulf Smith (Goteborg, Sweden). The leptin used in the experiments shown was obtained from Biogenesis (Poole, Dorset, UK), but because there is still some debate regarding the reliability of some commercially obtained leptin, we also obtained additional batches from Peprtech (London), Calbiochem (San Diego, CA), and R and D Systems (Minneapolis, MN). Leptin from all these sources gave very similar results.

Cell culture. The murine macrophage cell line J774.2 was grown in RPMI medium (2 g/l glucose) supplemented with 10% fetal calf serum (heat inactivated at 50°C for 30 min) and 1% antibiotic-antimycotic. The medium was removed and replaced with fresh medium every 48 h. 3T3-L1 fibroblasts were cultured and differentiated as we have described previously (23). Adipocytes were used on day 8.

Immunoprecipitation and Western blotting analysis. J774.2 macrophages were serum-starved overnight in serum-free RPMI medium containing 0.2% bovine serum albumin (BSA) (fatty acid-free). This was replaced with fresh RPMI/BSA before stimulation. 3T3-L1 adipocytes were washed twice with 1 ml DMEM (1 g/l glucose) containing 5 mg/ml BSA (fatty acid-free) before being incubated in DMEM/BSA for 2 h. This medium was replaced with DMEM/BSA containing 20 mmol/l HEPES before stimulation. After stimulation, cells were washed once with ice-cold phosphate-buffered saline (calcium- and magnesium-free) and lysed in lysis buffer containing 1% triton X100, 10 mmol/l Tris base, 5 mmol/l EDTA, 0.1 mmol/l sodium orthovanadate, 10 μ g/ml leupeptin, 1 μ g/ml pepstatin, and 200 KIU aprotinin. Cell lysate was incubated at 4°C with primary antibody for 2 h before incubation with protein A-agarose (HSL) or anti-mouse IgG (Py99) for an additional hour. The immunoprecipitate was washed extensively before being resuspended in Western loading buffer (20% glycerol, 4% SDS, 200 mmol/l dithiothreitol, 0.2 mol/l Tris buffer pH 6.8) and subjected to SDS polyacrylamide gel electrophoresis. Samples were then transferred onto polyvinylidene fluoride. [125 I]-protein A was used as secondary antibody, and reactive bands were detected using a Fuji FLA2000 phosphorimager (Tokyo).

HSL/nCE assay. To measure the nCE activity in macrophage lysates, the cell monolayers were washed with phosphate-buffered saline before being scraped into 200 μ l of assay buffer (5 mmol/l imidazole pH 7.0, 30% glycerol, 50 mmol/l NaCl, 20 mmol/l EDTA, 0.1 mmol/l benzamidine, 5 μ mol/l sodium pyrophosphate, 1 mmol/l dithiothreitol, 5 μ g/ml leupeptin, 1 μ g/ml pepstatin, 200 KIU aprotinin). Cells were lysed with four rounds of freeze-thawing followed by centrifugation at 14,000 rpm at 4°C, and 25- μ l aliquots of the cell lysate (~0.15 mg protein) were assayed. nCE activity was measured either directly in lysates or in anti-HSL immunoprecipitates.

The assay was performed as described previously (23). Briefly, the substrate was prepared by drying down a mixture of cholesterol [14 C]-oleate (2.5 μ Ci, 30 μ g) and cholesterol oleate (400 μ g) under nitrogen. The lipid was then resuspended in 100 μ l ethanol and added to a mixture of 100 mg BSA, 1 ml 0.2 mol/l sodium phosphate buffer pH 7, and 2.4 ml distilled water. A total of 175 μ l substrate was added to a 25- μ l sample and incubated for 50 min at 37°C. To stop the reaction, 0.5 ml of stopping buffer was added (0.1 mol/l potassium tetraborate, 0.1 mol/l potassium carbonate, pH 10.5), followed by 1.6 ml extraction buffer (methanol [1.41]/chloroform [1.25]/heptane [1]) containing 0.3% (w/v) of unlabeled oleic acid as a carrier. The mixture was vortexed vigorously and then centrifuged at 3,000 rpm for 10 min at 10°C, and 0.5 ml of the upper layer containing [14 C]-oleic acid was transferred to vials containing 5 ml scintillation fluid. We found that 1 unit of enzyme activity catalyzes the release of 1 μ mol oleate per minute.

RESULTS

Acute regulation of nCE activity of HSL by insulin. In the current study, we investigated the acute effects of

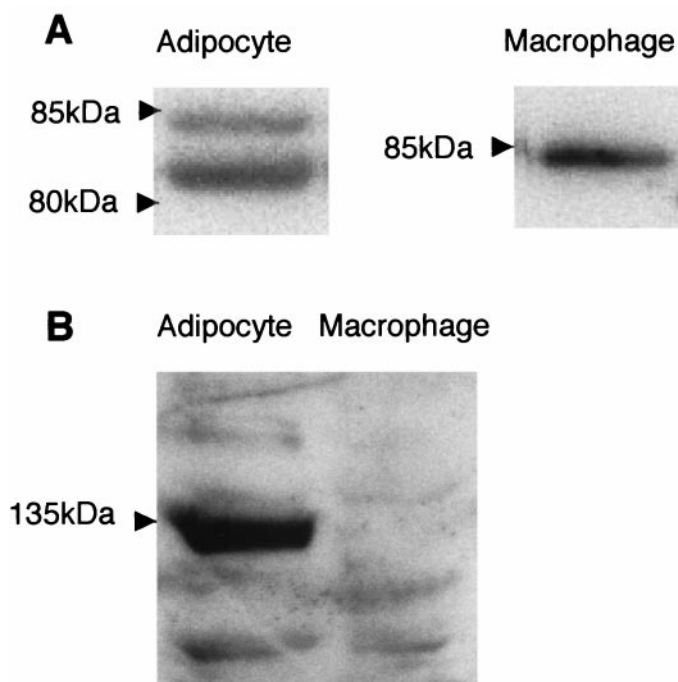


FIG. 1. Expression of HSL and PDE3B in 3T3-L1 adipocytes and J774.2 macrophages. Lysates of unstimulated 3T3-L1 adipocytes and J774.2 macrophages were prepared, and samples containing 200 μ g of protein were subjected to SDS-PAGE and Western blot with anti-HSL antibody (A) and anti-PDE3B antibody (B).

insulin and leptin on HSL activity in adipocytes and macrophages. The 3T3-L1 system was used as an adipocyte model because the effects of insulin on HSL have been partially characterized in these cells (18,24). The murine J774.2 macrophage cell line was used because it has been demonstrated to be a good model of mouse peritoneal macrophages (25) and some characterization of HSL activity has been performed in these cells (13,24,26). We find that both cell types express the 85-kDa active form of HSL, whereas in 3T3-L1 adipocytes, the HSL antibodies also react with a band of 80 kDa (Fig. 1). The identity of the 80-kDa band is not clear, but alternative splicing of the HSL gene has been reported previously (27). PDE3B, which is important in regulation of HSL by insulin in adipocytes, is expressed in 3T3-L1 adipocytes but is not found in J774.2 macrophages (Fig. 1).

Short-term incubation of serum-starved cells with insulin caused a ~30% reduction in HSL nCE activity in 3T3-L1 adipocytes (Fig. 2). Insulin causes a similar reduction in activity in HSL immunoprecipitates from J774.2 macrophages, and this was paralleled by a very similar decrease in nCE activity in the cell lysates (Fig. 3).

Isoprenaline acutely stimulates HSL nCE activity in 3T3-L1 adipocytes, presumably via an increase in cAMP levels and activation of protein kinase A (PKA) (Fig. 4A). The magnitude of the effects on HSL are very similar to the level of activation induced by directly phosphorylating HSL with PKA in vitro (28). Insulin counters the isoprenaline stimulation of HSL in adipocytes (Fig. 4A). This might be expected, given that these effects parallel the effects that insulin and adrenergic stimuli have on HSL activity in these cells (24), although this has not previously been demonstrated in anti-HSL immunoprecipitates.

Activation of HSL by cAMP has been reported previ-

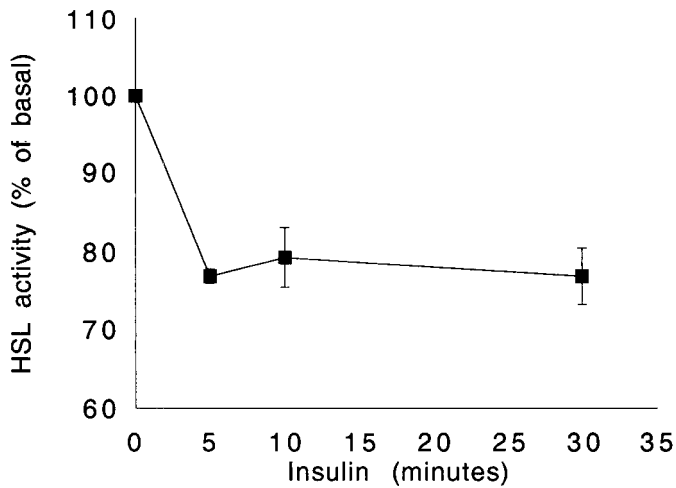


FIG. 2. Effect of insulin on basal HSL activity in adipocytes. 3T3-L1 adipocytes were serum-starved for 2 h in DMEM containing 5 mg/ml BSA. Cells were stimulated with 1 $\mu\text{mol/l}$ insulin. At various time points, cells were lysed, and HSL was immunoprecipitated and assayed for nCE activity. Data represent the mean \pm SE of two independent experiments, each performed in triplicate.

ously in macrophages (29,30), although it is not known whether insulin can attenuate this activation. We found that isoprenaline had no effects on the nCE activity of HSL in the J774.2 macrophage cell line (data not shown), but this could just be a result of a lack of appropriate cell surface receptors. Therefore, we used CPT-cAMP, a cell-permeable analog of cAMP. This compound was used at a concentration of 1 mmol/l because it had been found previously that this concentration caused a maximal effect on cholesterol ester clearance from J774 macrophages (25,26). Using this, we found that increasing cellular cAMP does indeed stimulate the nCE activity of HSL (Fig. 4B). The magnitude of cAMP-induced activation of HSL is very similar to that reported previously in macrophage cell lines (29,30). Additionally, we found that insulin counters the effects of cAMP on HSL activity in macrophages as it does in adipocytes (Fig. 4B).

Effects of leptin on nCE activity. There is some debate regarding whether leptin has direct effects in peripheral tissues. Therefore, we sought to determine whether leptin signaling systems existed in J774.2 macrophages before conducting experiments on the effects of leptin on HSL. We used two antibodies to detect the leptin receptor: one

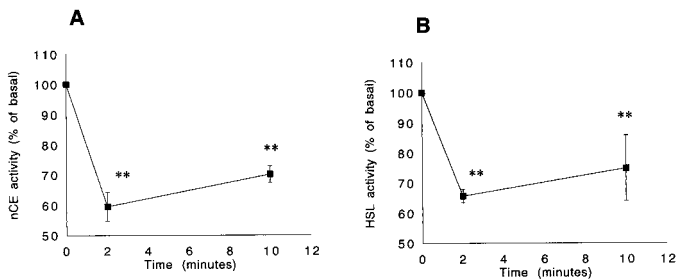


FIG. 3. Insulin causes similar downregulation of the nCE activity in lysates and in HSL immunoprecipitates in J774.2 macrophages. nCE activity was measured in aliquots of lysate containing 100 μg protein (A) and HSL immunoprecipitates (B) from J774.2 macrophages after stimulation with 1 $\mu\text{mol/l}$ insulin for varying times. Data represent the mean \pm SE of four independent determinations. ** $P < 0.01$ vs. basal.

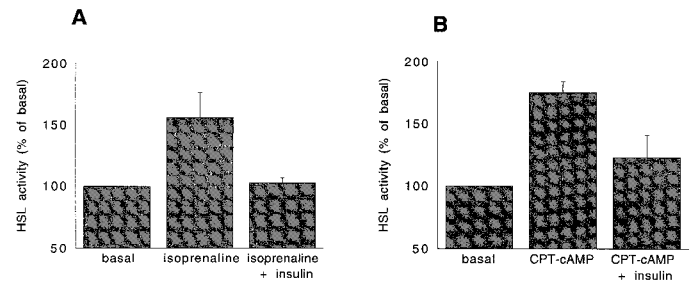


FIG. 4. Insulin counteracts cAMP-induced activation of HSL in both adipocytes and macrophages. 3T3-L1 adipocytes were treated with 10 $\mu\text{mol/l}$ isoprenaline (A), or J774.2 macrophages were treated with 1 mmol/l CPT-cAMP (B). Treatment was for 15 min in each case. Where indicated, 10 nmol/l insulin was added for the last 5 min. HSL was then immunoprecipitated and nCE activity was measured in these immunoprecipitates. Data represent the mean \pm SE of five independent determinations.

recognizing the extracellular domains, and thus recognizing all forms of the receptor (Fig. 5A), and another specific for the intracellular domain of the long (ObRb) form of the receptor (Fig. 5B). It has been established previously that ObRb runs at ~ 210 kDa under the gel conditions used (31,32) and that both leptin-receptor antibodies recognize a band of this molecular weight in J774.2 cells. ObRb was not detected in 3T3-L1 adipocytes, although several short forms of the leptin receptor are expressed in these cells (data not shown). In J774.2 macrophages, the level of the ObRb is much greater than the level of the ObRa form (Fig. 5A), and the ratio of these isoforms is similar to that seen in hypothalamus (33). Evidence that the ObRb is capable of mediating leptin signaling in these cells comes from the finding that the ObRb becomes rapidly tyrosine-phosphorylated after stimulation with low doses of leptin (Fig. 5C). This stimulation was 20-fold higher than basal levels after 15 min. Furthermore, leptin acutely stimulates tyrosine phosphorylation of JAK2 (Fig. 5D) and STAT3 (Fig. 5E) more than fourfold in J774.2 cells. It has been found previously that leptin stimulation of phosphorylation of both STAT3 and JAK2 requires the ObRb form of the leptin receptor (22,34). An important finding is that leptin can increase the nCE activity in anti-HSL immunoprecipitates

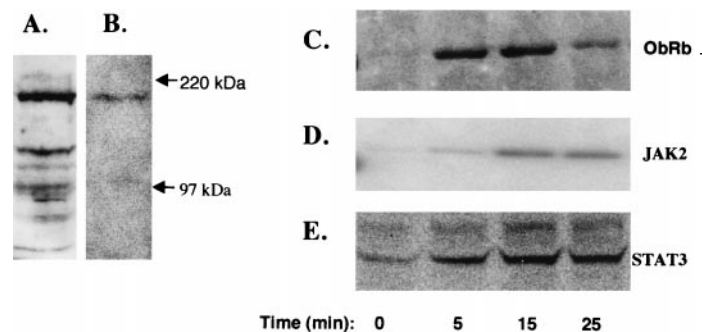


FIG. 5. Leptin signaling systems exist in J774.2 macrophages. J774.2 macrophage lysate (150 μg protein/lane) was Western blotted with anti-leptin receptor antibody recognizing all forms of the receptor (A) or with an antibody recognizing only the ObRb form of the leptin receptor (B). To investigate activation of signaling pathways, J774.2 macrophages were serum-starved overnight before stimulation with 2 nmol/l leptin for the indicated time. Cells were lysed and immunoprecipitated with anti-phosphotyrosine antibody, PY99, and Western blotted with anti-leptin receptor antibody (C) or with anti-JAK2 antibody (D), or cell lysates were directly immunoblotted with anti-phospho-STAT3 antibody (E). Similar results were obtained in at least three experiments in all cases.

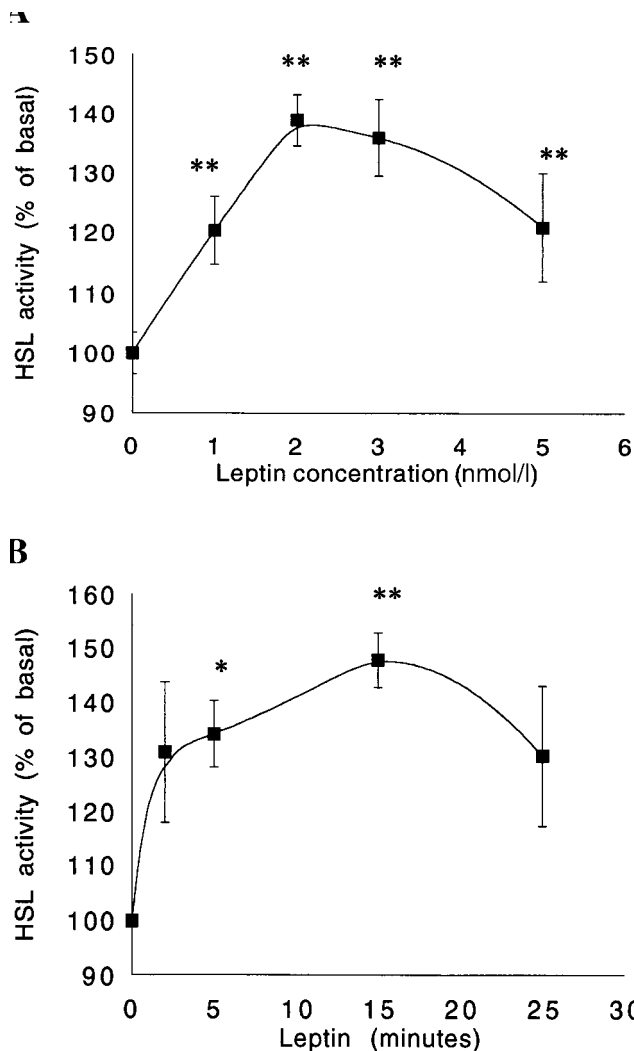


FIG. 6. Acute effects of leptin on HSL activity. *A*: Dose response for effect of leptin on HSL activity in macrophages. J774.2 macrophages were serum-starved overnight before stimulation with various concentrations of leptin for 15 min. Cells were harvested and lysed, and nCE activity was measured in HSL immunoprecipitates. Data represent the mean \pm SE of four independent determinations, each performed at least in duplicate. *B*: Time course for leptin stimulation of HSL activity in macrophages. Macrophages were serum-starved overnight and cells were stimulated with 2 nmol/l leptin and lysed at different time points. HSL was immunoprecipitated and nCE activity was determined, as described in RESEARCH DESIGN AND METHODS. Data represent the mean \pm SE of four independent determinations, performed at least in duplicate. * $P < 0.05$; ** $P < 0.01$ vs. basal, as determined by Student's paired *t* test.

in J774.2 macrophages (Fig. 6A). This effect was maximal at 2 nmol/l leptin. The effect was seen at concentrations of leptin as low as 0.5 nmol/l, which is within the range of concentrations found in obese humans (2,3); surprisingly, however, this effect diminishes greatly at concentrations of leptin higher than 10 nmol/l (not shown). The effects of leptin were rapid, reaching maximum within 15 min (Fig. 6B). Furthermore, the effects of leptin were additive with those of CPT-cAMP (Fig. 7).

Role of PI 3-kinase in signaling pathways regulating the nCE activity of HSL. There is strong evidence that the regulation of HSL activity by insulin in adipocytes is mediated by PI 3-kinase, because the PI 3-kinase inhibitor wortmannin blocks the inhibition of lipolysis by insulin (35). We found that the inhibition of HSL by insulin in 3T3-L1 adipocytes was also blocked using those concen-

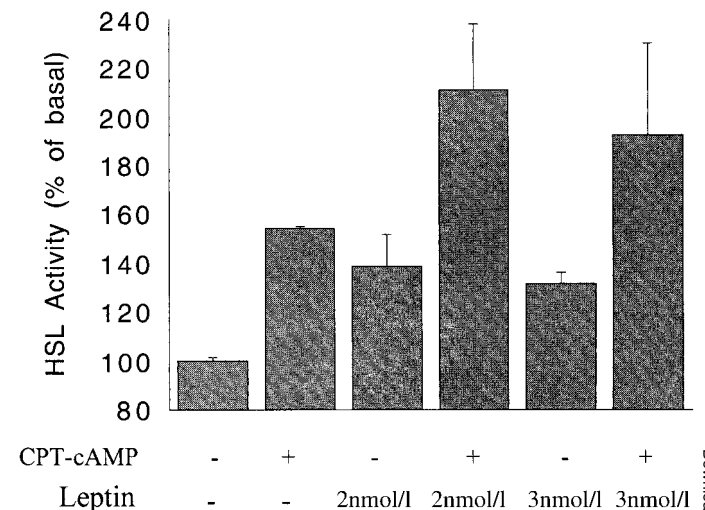


FIG. 7. The effects of leptin and cAMP in macrophages are additive. J774.2 macrophages were serum-starved overnight before stimulation for 15 min with 1 mmol/l CPT-cAMP, alone or with the addition of the indicated concentration of leptin. Cells were lysed and HSL was immunoprecipitated. nCE activity was measured in the immunoprecipitates, as described in RESEARCH DESIGN AND METHODS. Data represent the mean \pm SE of three independent determinations, each performed at least in duplicate.

trations of wortmannin at which the drug specifically inhibits PI 3-kinase activity (Fig. 8A). However, similar concentrations of wortmannin had no effect on the attenuation of HSL activity by insulin in J774 macrophages (Fig. 8B). Similar results were obtained using LY294002, an alternative PI 3-kinase inhibitor (data not shown). Surprisingly, 100 nmol/l wortmannin completely blocked the leptin-induced stimulation of HSL nCE activity, whereas wortmannin alone had no significant effect (Fig. 8C).

Because wortmannin blocked the effects of leptin but not those of insulin, we investigated whether these stimuli were able to activate PI 3-kinase in the J774.2 cells. We found that both insulin and leptin rapidly stimulate recruitment of the class Ia PI 3-kinase adapter subunit (p85 α) to tyrosine-phosphorylated signaling complexes in J774.2 macrophages (Fig. 9); however, the stimulation by insulin is only 70% above basal, whereas leptin stimulates p85 recruitment 400% above basal. This indicates that they are activating PI 3-kinase, and in support of this, we found that both of these stimuli also cause an increase in PI 3-kinase activity in anti-phosphotyrosine immunoprecipitates that parallel their ability to recruit p85 α (data not shown).

DISCUSSION

Coronary artery disease is a major cause of premature death in obese and diabetic individuals (5,36), and these conditions are characterized by increased levels of insulin (1) and leptin (2). There is accumulating evidence that hyperleptinemia (37) and the combination of hyperinsulinemia and hyperglycemia (5) play direct roles in the development of atherosclerosis. Much attention has focused on understanding the mechanisms and regulation of deposition of esterified cholesterol in macrophage foam cells, although until recently, not much attention has been given to the role of nCE in this process. Evidence from mice with targeted disruption of the HSL gene strongly suggest that HSL is the enzyme responsible for nCE activity in a wide

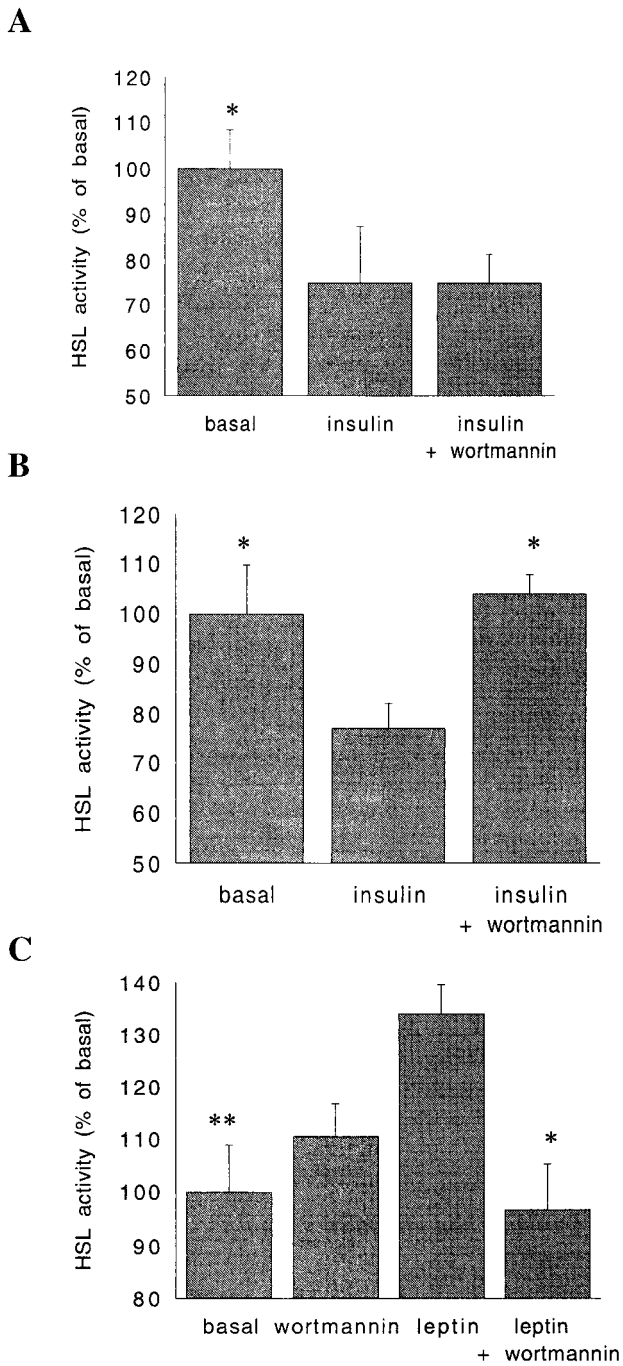


FIG. 8. Wortmannin blocks the effects of leptin on HSL in macrophages but not the effects of insulin. Serum-starved J774.2 macrophages (A) or 3T3-L1 adipocytes (B) were treated with 1 $\mu\text{mol/l}$ insulin for 10 min, and serum-starved J774.2 macrophages (C) were treated with 3 nmol/l leptin for 5 min. Where indicated, cells were preincubated for 10 min before stimulation with 100 nmol/l wortmannin. HSL was immunoprecipitated, and nCE activity was measured. Each bar represents mean \pm SE of three experiments. * $P < 0.05$; ** $P < 0.01$ vs. insulin/leptin, as determined by Student's paired *t* test.

range of tissues (8). Evidence from several experimental approaches also indicates that HSL is a rate-limiting enzyme in cholesterol ester efflux from macrophages (9–14).

It is possible that regulation of HSL by leptin and insulin could, at least in part, explain deposition of cholesterol ester and formation of foam cells. Such a scenario is best established for insulin, which is known to counter cAMP-induced increases in HSL activity in adipocytes; this is

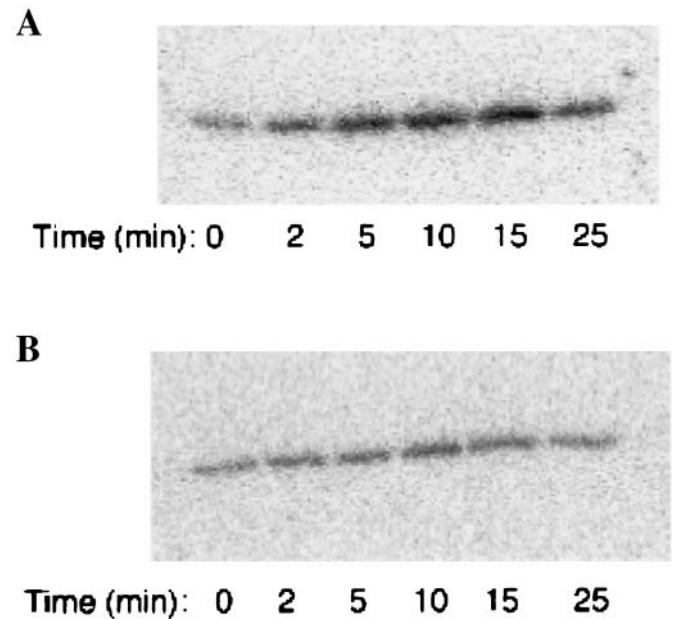


FIG. 9. Both insulin and leptin activate PI 3-kinase in J774.2 macrophages. J774.2 macrophages were serum-starved overnight before stimulation with 10 nmol/l insulin or 3 nmol/l leptin for the indicated times. Cells were lysed and immunoprecipitated with an anti-phosphotyrosine antibody, as described in RESEARCH DESIGN AND METHODS. Results show the immunoprecipitates from leptin-stimulated cells (A) or insulin-stimulated cells (B) Western blotted with p85 α antibody. This is representative of the results of three separate experiments.

believed to be a key step in mediating the antilipolytic effects of insulin (15). It is known that HSL in macrophages is activated by agents that increase cAMP levels (26,29,30), but the effect of insulin on HSL in macrophages has not been investigated previously. Our finding that insulin cannot only counter the cAMP-induced activation of HSL but also acutely downregulate basal activity of HSL thus provides the first direct evidence that insulin could contribute to formation of macrophage foam cells via effects on HSL.

The finding that leptin stimulates HSL in macrophages is novel and suggests that leptin has an acute protective effect against accumulation of cholesterol ester in these cells. There is currently a great deal of controversy regarding whether leptin directly regulates glucose and lipid metabolism in peripheral tissues. A number of studies have reported that leptin has direct effects (19–22,33,34,38,39), whereas an almost equal number of studies in similar tissue types have found that leptin alone has no direct effects (32,40–42). One explanation for this could be variability in the source of leptin; for this reason, we obtained leptin from four different sources, and all gave essentially similar results. Another source of variation in the experimental observations could lie in differences in leptin signaling systems present in the different cell types used. Evidence indicates that leptin only signals inside the cells when the long form (ObRb) of the leptin receptor is expressed (22,31,34,43). Expression of ObRb is very high in specific cell types in the hypothalamus but seems to be very low in other tissues, certainly in relation to the short form of the receptor (ObRa) (44). The apparent absence of ObRb in peripheral tissues is cited as evidence that the main site of action for leptin is the hypothalamus. However, there are reports that T-cells express ObRb, at least

as determined by reverse transcriptase–polymerase chain reaction (45–49), although these studies have not explored expression at the protein level or leptin stimulation of signaling pathways. Our studies clearly establish that ObRb is the major form of leptin receptor present in J774.2 macrophages and that signaling pathways downstream of the leptin receptor are activated in these cells. These findings, along with the finding that leptin activates HSL, provide strong evidence that macrophages are a functionally relevant target tissue for leptin. Leptin has been shown previously to modulate immune cell functions, such as proliferation in T-cells (45–49) and cytokine production and phagocytosis in macrophages (45). Currently, adipocytes are the only known site of leptin production, and it is not clear why a cytokine secreted from adipose tissue would be useful in controlling these immune cell functions. However, the link between nutritional status and effects of leptin on HSL in macrophages is more easily rationalized because leptin has been reported previously to stimulate lipolysis in several other tissues (19–21). This has led to the proposal that, in addition to its role in regulating food intake, leptin has a protective effect on peripheral tissues in times of energy excess by limiting accumulation of lipid in nonadipose tissues via its ability to regulate lipolysis (50). Such a role would certainly be valuable in preventing formation of foam cells in macrophages.

The current study also established that insulin and leptin regulate HSL activity in macrophages using signaling mechanisms distinct from those in adipocytes described previously. In particular, it is surprising that the effects of insulin on HSL in J774.2 macrophages are not blocked by wortmannin and thus presumably do not require activation of PI 3-kinase. This suggests that there are pathways regulating HSL other than the classical PI 3-kinase–protein kinase B (PKB)–PDE3B pathway. Indeed, there is previous evidence to support this. When there are relatively low levels of cAMP in adipocytes, the insulin-induced inhibition of lipolysis acts via phosphodiesterases (51). It is believed that this is achieved via activation of PI 3-kinase, which causes activation of PKB, which phosphorylates and activates PDE3B (52). This, in turn, decreases the cAMP levels produced in response to lipolytic stimuli and thus reduces the phosphorylation of HSL by PKA (15). However, at high cellular concentrations of cAMP, the inhibition of lipolysis by insulin is not mediated by phosphodiesterases (51), indicating that there are several mechanisms contributing to the regulation of lipolysis by insulin in adipocytes. Our evidence suggests that insulin regulates HSL by non–PI 3-kinase–dependent pathways in the J774.2 macrophage line. In support of this, we found that although insulin activates PI 3-kinase in the J774.2 cells, the effect is small. However, even if PI 3-kinase was highly stimulated in these cells, it is unlikely that this would be sufficient to regulate cAMP via PKB because PDE3B levels are so low in these cells. It could be that insulin is regulating other PDE isoforms in macrophages. There is evidence that PDE4 can take part in non–PI 3-kinase–dependent pathways regulating fatty acid release (53) and that PDE4 is present in macrophages (54). It is known that PDE4 can be regulated by interleukin-4 in myeloid cells (55) and that insulin and interleukin-4 share some overlap in their intracellular signaling pathways in

hematopoietic cells (56). Alternatively, it is possible that the regulation of HSL by insulin does not involve cAMP-dependent pathways but instead acts via regulation of the protein phosphatases that have been demonstrated previously to act on HSL (57).

The mechanism by which leptin acts to increase HSL activity in macrophages is unclear. Increasing cAMP is the most well-established mechanism for activating HSL, but there are conflicting reports regarding the effect of leptin on cellular levels of cAMP. In chromaffin cells, leptin causes a very modest increase in cAMP levels (58), whereas in pancreatic β -cells, leptin causes a decrease in cAMP levels (39). However, in the β -cells, the decrease in cAMP is apparently caused by a leptin-induced activation of PDE3B (39). Because the level of PDE3B is very low in the J774.2 macrophages, it is possible that in the absence of this negative regulator of cAMP, leptin is actually increasing cAMP levels, as seen in chromaffin cells. However, it is unclear how leptin, but not insulin, would achieve this in a PI 3-kinase–dependent manner.

In conclusion, we have identified macrophages as a novel target for leptin-mediated effects on lipid metabolism. Furthermore, we found that leptin- and insulin-mediated pathways acutely regulating HSL activity in macrophages differ from those defined previously in other tissues. Based on these findings, we suggest that leptin and insulin could play counteracting roles in regulating cholesterol ester homeostasis in macrophages. Therefore, either leptin resistance or increased insulin action could contribute to the increased formation of foam cells and atherosclerosis in obese and diabetic individuals.

ACKNOWLEDGMENTS

This work was funded by a project grant from the British Heart Foundation. L.O. is funded by a postgraduate studentship from BBSRC.

We thank Drs. Martin Myers, Ulf Smith, and Raj Beri for supplying antibodies.

REFERENCES

1. Kahn BB: Type 2 diabetes: when insulin secretion fails to compensate for insulin resistance. *Cell* 92:593–596, 1998
2. Considine RV, Sinha MK, Heiman ML, Kriauciunas A, Stephens TW, Nyce MR, Ohannesian JP, Marko CC, McKee LJ, Bauer TL, Caro JF: Serum immunoreactive leptin levels in normal weight and obese humans. *N Engl J Med* 334:292–295, 1996
3. Maffei M, Halaas J, Ravussin E, Pratley RE, Lee GH, Zhang Y, Fei H, Kim S, Lallone R, Ranganathan S, Kern PA, Friedman JM: Leptin levels in human and rodent: measurement of plasma leptin and ob RNA in obese and weight reduced subjects. *Nature Med* 1:1155–1161, 1995
4. Boden G: Role of free fatty acids in the pathogenesis of insulin resistance and diabetes. *Diabetes* 46:3–10, 1997
5. Laakso M: Hyperglycemia and cardiovascular disease in type-2 diabetes. *Diabetes* 48:937–942, 1999
6. Strydom HC, Chandler AB, Glagov S, Guyton JR, Insull W, Rosenfeld ME, Schaffer SA, Schwartz CJ, Wagner WD, Wissler RW: A definition of initial, fatty streak and intermediate lesions of atherosclerosis. *Circulation* 89:2462–2478, 1994
7. Ross R: Atherosclerosis: an inflammatory disease. *N Engl J Med* 340:115–126, 1999
8. Osuga J, Ishibashi S, Oka T, Yagyu H, Tozawa R, Fujimoto A, Shionoiri F, Yahagi N, Kraemer FB, Tsutsumi O, Yamada N: Targeted disruption of hormone sensitive lipase results in male sterility and adipocytes hypertrophy, but not in obesity. *Proc Natl Acad Sci U S A* 97:787–792, 2000
9. Escary J, Choy HA, Reue K, Schotz MC: Hormone sensitive lipase overexpression increases cholesterol ester hydrolysis in macrophages. *Arterioscler Thromb Vasc Biol* 18:991–998, 1998

10. Graham A, Angell ADR, Jepson CA, Yeaman SJ, Hassall DG: Impaired mobilisation of cholesterol from stored cholesteryl esters in human (THP1) macrophages. *Atherosclerosis* 120:135–145, 1996
11. Ishii I, Ito Y, Morisaki N, Saito Y, Hirose S: Genetic differences of lipid metabolism in macrophages from C57BL/6J and C3H/HeN mice. *Arterioscler Thromb Vasc Biol* 15:1189–1194, 1995
12. Tomita T, Sawamura F, Uetsuka R, Chiba T, Miura S, Ikeda M, Tomita I: Inhibition of cholesteryl ester accumulation by 17 β estradiol in macrophages through activation of neutral cholesterol esterase. *Biochim Biophys Acta* 1300:210–218, 1996
13. Jepson CA, Harrison JA, Kraemer FB, Yeaman SJ: Down-regulation of hormone-sensitive lipase in sterol laden J774.2 macrophages. *Biochem J* 318:173–177, 1996
14. Miura S, Chiba T, Mochizuki N, Nagura H, Nemoto K, Tomita I, Ikeda M, Tomita T: Cholesterol-mediated changes of neutral cholesterol esterase activity in macrophages. *Arterioscler Thromb Vasc Biol* 17:3033–3040, 1997
15. Yeaman SJ, Smith GM, Jepson CA, Wood SL, Emmison N: The multifunctional role of hormone-sensitive lipase in lipid metabolism. *Adv Enzyme Regul* 34:355–370, 1994
16. Clifford GM, Londos C, Kraemer FB, Vernon RG, Yeaman SJ: Translocation of hormone-sensitive lipase and perilipin upon lipolytic stimulation of rat adipocytes. *J Biol Chem* 275:5011–5015, 2000
17. Shen W, Sridhar K, Bernlohr DA, Kraemer FB: Interaction of rat hormone-sensitive lipase with adipocyte lipid-binding protein. *Proc Natl Acad Sci U S A* 96:5528–5532, 1999
18. Syu L, Saltiel AR: Lipotransin: a novel docking protein for hormone-sensitive lipase. *Molecular Cell* 4:109–115, 1999
19. Wang M, Lee Y, Unger RH: Novel forms of lipolysis induced by leptin. *J Biol Chem* 274:17541–17544, 1999
20. Siegrist-Kaiser CA, Pauli V, Juge-Aubry CE, Boss O, Pernin A, Chin WW, Cusin I, Rohrer-Jeanraud F, Burger AG, Zapf J, Meier CA: Direct effects of leptin on brown and white adipose tissue. *J Clin Invest* 100:2858–2964, 1997
21. Fruhbeck G, Aguado M, Martinez JA: In vitro effect of leptin on mouse adipocytes: evidence for a possible autocrine/paracrine role of leptin. *Biochem Biophys Res Commun* 240:590–594, 1997
22. Banks AS, Davis SM, Bates SH, Myers MG: Activation of downstream signals by the long form of the leptin receptor. *J Biol Chem* 275:14563–14572, 2000
23. Navé BT, Haigh RJ, Hayward AC, Siddle K, Shepherd PR: Compartment specific regulation of phosphoinositide 3-kinase by PDGF and insulin in 3T3–L1 adipocytes. *Biochem J* 318:55–60, 1996
24. Kawamura M, Jensen DF, Wancewicz EV, Joy LL, Khoo JC, Steinberg D: Hormone-sensitive lipase in differentiated 3T3–L1 cells and its activation by cyclic AMP-dependent protein kinase. *Proc Natl Acad Sci U S A* 78:732–736, 1981
25. Bernard DW, Rodriguez A, Rothblat GH, Glick JM: cAMP stimulates cholesteryl ester clearance to high density lipoproteins in J774 macrophages. *J Biol Chem* 266:710–716, 1991
26. Sakr SW, Williams DL, Stoudt GW, Phillips MC, Rothblat GH: Induction of cellular cholesterol efflux to lipid-free apolipoprotein A-I by cAMP. *Biochim Biophys Acta* 1438:85–98, 1999
27. Laurrell H, Grober J, Vindis C, Lacombe T, Dauzats M, Holm C, Langin D: Species-specific alternative splicing generates a catalytically inactive form of human hormone-sensitive lipase. *Biochem J* 328:137–143, 1997
28. Khoo JC, Steinberg D, Huang JJ, Vagelos PR: Triglyceride, diglyceride, monoglyceride, and cholesterol ester hydrolases in chicken adipose tissue activated by adenosine 3':5'-monophosphate-dependent protein kinase. *J Biol Chem* 251:2882–2890, 1976
29. Small CA, Rogers M, Goodacre JA, Yeaman SJ: Phosphorylation and activation of hormone-sensitive lipase in isolated macrophages. *FEBS Lett* 279:323–326, 1991
30. Khoo JC, Maloney EM, Steinberg D: Neutral cholesterol esterase activity in macrophages and its enhancement by cAMP-dependent protein kinase. *J Biol Chem* 256:12659–12661, 1981
31. Bjørboek C, Haschimi KE, Frantz JD, Flier JS: The role of SOCS3 in Leptin signaling and leptin resistance. *J Biol Chem* 274:30059–30065, 1999
32. Szanto I, Kahn CR: Selective interaction between leptin and insulin signaling pathways in a hepatic cell line. *Proc Natl Acad Sci U S A* 97:2355–2360, 2000
33. Zhao AZ, Shinohara MM, Huang D, Shimizu M, Eldar-Finkelman H, Krebs EG, Beavo JA, Bornfeldt KE: Leptin induces insulin-like signaling that antagonizes cAMP elevation by glucagon in hepatocytes. *J Biol Chem* 275:11348–11354, 2000
34. Kim Y, Uotani S, Pierroz DD, Flier JS, Kahn BB: In vivo administration of leptin activates signal transduction directly in insulin-sensitive tissues: overlapping but distinct pathways from insulin. *Endocrinology* 141:2328–2339, 2000
35. Okada T, Kawano Y, Sakakibara T, Hazeki O, Ui M: Essential role of phosphatidylinositol 3-kinase in insulin-induced glucose transport and antilipolysis in rat adipocytes. *J Biol Chem* 269:3568–3573, 1994
36. Kopelman PG: Obesity is a medical problem. *Nature* 404:635–643, 2000
37. Leyva F, Godsland I, Ghatei M, Proudler AJ, Aldis S, Waton C, Bloom S, Stevenson JC: Hyperleptinemia as a component of a metabolic syndrome of cardiovascular risk. *Atheroscler Thromb Vasc Biol* 18:928–933, 1998
38. Berti L, Kellerer M, Capp E, Haring H: Leptin stimulates glucose transport and glycogen synthesis in C2C12 myotubes: evidence for a PI 3-kinase mediated effect. *Diabetologia* 40:606–609, 1997
39. Zhao A, Bornfeldt KE, Beavo JA: Leptin inhibits insulin secretion by activation of phosphodiesterase 3b. *J Clin Invest* 102:869–873, 1998
40. Ranganathan S, Ciaraldi TP, Henry RR, Mudaliar S, Kern PA: Lack of effect of leptin on glucose transport, lipoprotein lipase and insulin action in adipose and muscle cells. *Endocrinology* 139:2509–2513, 1998
41. Zierath JR, Frevert EU, Ryder JW, Berggren PO, Kahn BB: Evidence against a direct effect of leptin on glucose transport in skeletal muscle and adipocytes. *Diabetes* 47:1–4, 1997
42. Muller G, Ertl J, Gerl M, Preibsch G: Leptin impairs the metabolic actions of insulin in isolated rat adipocytes. *J Biol Chem* 272:10585–10593, 1997
43. Baumann H, Morella KK, White DW, Dembski M, Bailon PS, Kim H, Lai C, Tartaglia LA: The full-length leptin receptor has signalling capabilities of interleukin 6-type cytokine receptors. *Proc Natl Acad Sci U S A* 93:8374–8378, 1996
44. Tartaglia LA: The leptin receptor. *J Biol Chem* 272:6093–6096, 1997
45. Gainsford T, Willson TA, Metcalf D, Handman E, McFarlane C, Ng A, Nicola NA, Alexander WS, Hilton DJ: Leptin can induce proliferation, differentiation and functional activation of hematopoietic cells. *Proc Natl Acad Sci U S A* 93:14564–14568, 1996
46. Bennett BD, Solar GP, Yuan JQ, Mathias J, Thomas GR, Matthews W: A role for leptin and its cognate receptor in hematopoiesis. *Curr Biol* 6:1170–1180, 1996
47. Martin-Romero C, Santos-Alvarez J, Goberna R, Sanchez-Margalet V: Human leptin enhances activation and proliferation of human circulating T lymphocytes. *Cell Immunol* 199:15–24, 2000
48. Santos-Alvarez J, Goberna R, Sanchez-Margalet V: Human leptin stimulates proliferation and activation of human circulating monocytes. *Cell Immunol* 194:6–11, 1999
49. Lord GM, Matarese G, Howard JK, Baker RJ, Bloom SR, Lechler RI: Leptin modulates T-cell immune response and reverses starvation-induced immunosuppression. *Nature* 394:897–901, 1998
50. Unger RH, Zhou Y, Orci L: Regulation of fatty acid homeostasis in cells: novel role of leptin. *Proc Natl Acad Sci U S A* 96:2327–2332, 1999
51. Londos C, Honnor RC, Dhillon GS: cAMP-dependent protein kinase and lipolysis in rat adipocytes: multiple modes of insulin regulation of lipolysis and regulation of insulin responses by adenylyl cyclase regulators. *J Biol Chem* 260:15139–15145, 1985
52. Wijkander J, Rahn-Landstrom T, Manganiello V, Belfrage P, Degerman E: Insulin-induced phosphorylation and activation of phosphodiesterase 3b in rat adipocytes: possible role for protein kinase B but not MAP kinase or p70 S6 kinase. *Endocrinology* 139:219–227, 1998
53. Harmelen VV, Reynisdottir S, Cianflone K, Degerman E, Hoffstedt J, Nilsell K, Srideman A, Arner P: Mechanism involved in the regulation of free fatty acid release from isolated human fat cells by acylation-stimulating protein and insulin. *J Biol Chem* 274:18243–18251, 1999
54. Gantner F, Kupferschmidt R, Schudt C, Wendel A, Hatzelmann A: In vitro differentiation of human monocytes to macrophages: changes in PDE profile and its relationship to suppression of tumour necrosis factor α release by PDE inhibitors. *Br J Pharmacol* 121:221–231, 1997
55. Ahmed F, Gao G, Wang L, Landstrom LM, Degerman E, Pierce JH, Manganiello VC: IL3 and IL4 activate PDE3 and PDE4 by two different methods in FDCP2 myeloid cells. *J Immunol* 162:4864–4875, 1999
56. Wang LM, Myers MG, Sun XJ, Aaronson SA, White M, Pierce JH: IRS-1 is essential for insulin stimulated and IL-4 stimulated mitogenesis in hematopoietic cells. *Science* 261:1591–1594, 1993
57. Wood SL, Emmison N, Borthwick AC, Yeaman SJ: The protein phosphatases responsible for dephosphorylation of hormone-sensitive lipase in isolated rat adipocytes. *Biochem J* 295:531–535, 1993
58. Takekoshi K, Motooka M, Isobe K, Nomura F, Manmoku T, Ishii K, Nakai T: Leptin directly stimulates catecholamine secretion and synthesis in cultured porcine adrenal chromaffin cells. *Biochem Biophys Res Commun* 261:426–431, 1999