



## Erratum

### Transcription Factor 7-Like 2 Regulates $\beta$ -Cell Survival and Function in Human Pancreatic Islets. *Diabetes* 2008;57:645–653

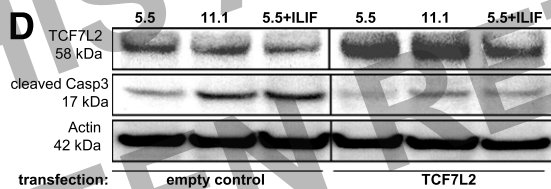
DOI: 10.2337/db14-er11

Luan Shu, Nadine S. Sauter,  
Fabienne T. Schulthess,  
Aleksey V. Matveyenko,  
José Oberholzer, and Kathrin Maedler

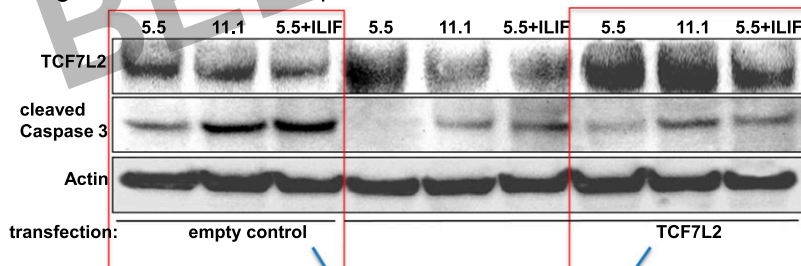
The authors of the above-cited work have noticed that one actin panel, which was used to confirm similar protein loading across the Western blot gel, was mistakenly used in Fig. 5D. At the time of publication, many similar experiments were done, and Western blot analyses of TCF7L2 upon upregulation by TCF7L2 overexpression were performed. Corresponding actin blots were very similar and thus were mistakenly switched.

The figures below show the initial Fig. 5D, as well as the original blots of the whole experiment together with the correct actin blot, which corresponds to the respective experiment. TCF7L2 as well as Caspase-3 blots were correct and remain unchanged.

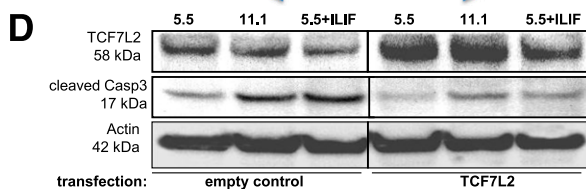
The authors apologize for the mistake and any inconvenience it may have caused the readers.



Original blots of whole experiment



Corrected version



THIS ARTICLE HAS BEEN FULLY TRACTED