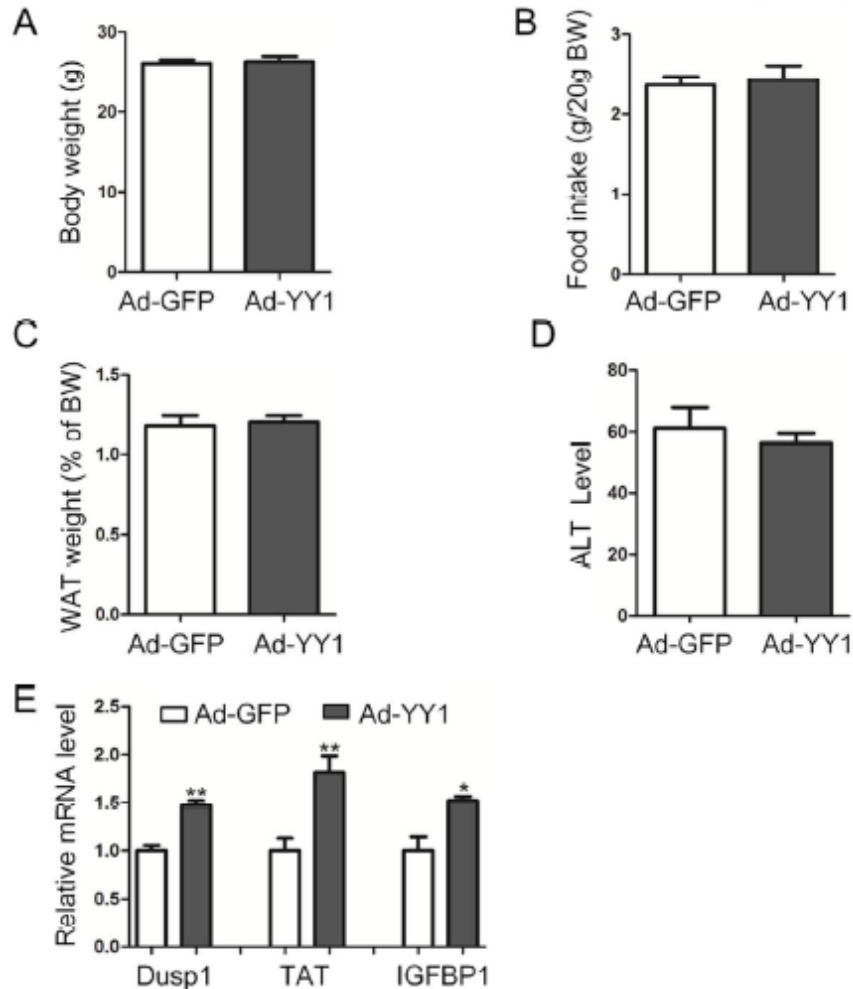
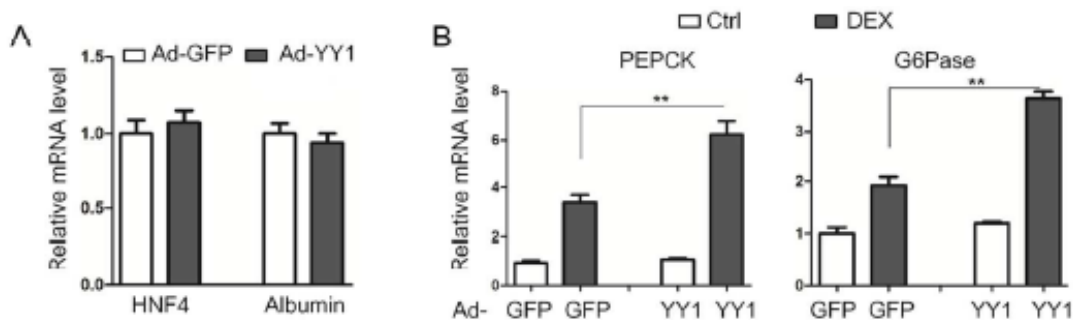


SUPPLEMENTARY DATA

**Supplementary Figure 1.** A-D: Body weights (A), food intake (B), epididymal fat weight (C) and serum ALT levels (D) were analyzed in C57BL/6 mice overexpressing GFP or YY1. (n=8). E: Real-time PCR analysis of GR target genes in mice with Ad-GFP or Ad-YY1. (n=8). After a 24 hr fast, mice were sacrificed at day 14 after virus injection (A, C). Plasma and liver tissues were collected for further analysis (D, E). Food intake was recorded daily from day 11 to day 13 under fed condition (B).

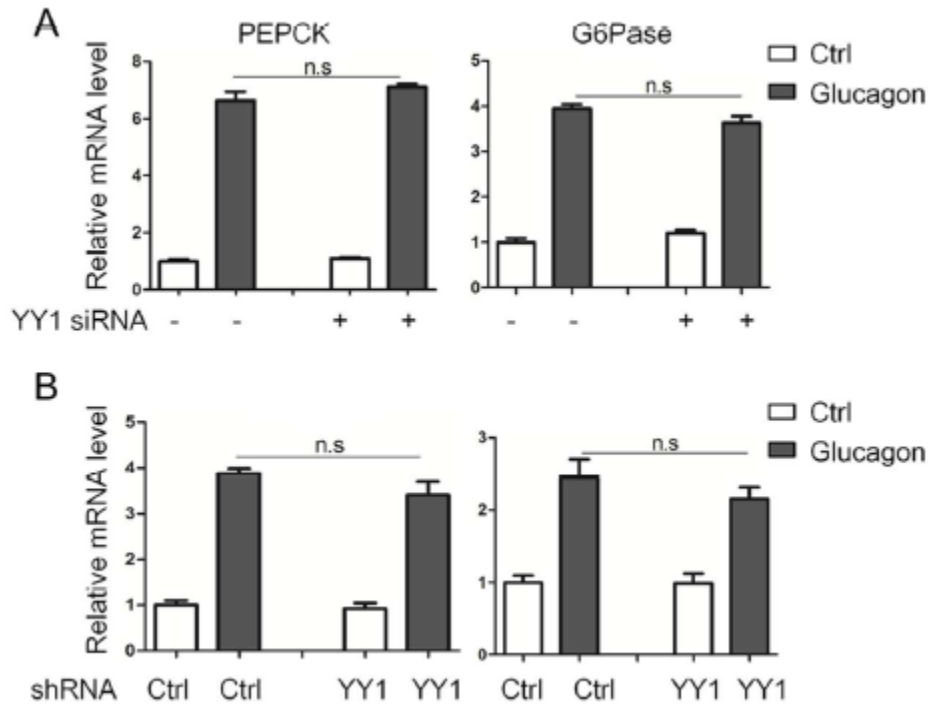


**Supplementary Figure 2.** A: Real-time PCR analysis of HNF4 and albumin in HepG2 cells transfected with adenovirus expressing GFP or YY1. B: Real-time PCR analysis of PEPCK and G6Pase expression in mice primary hepatocytes transfected with GFP or YY1, in the absence or presence of dexamethasone (10nM). (n=4).



SUPPLEMENTARY DATA

**Supplementary Figure 3.** *A:* Real-time PCR analysis of PEPCK and G6Pase expression. HepG2 cells, transfected with YY1 and control siRNA oligos, were incubated with glucagon (100nM) or vehicle control (Ctrl) for 6 hr. *B:* Real-time PCR analysis of PEPCK and G6Pase expression in C57BL/6 mice. After an 8 hr fast at day 6 after virus administration, mice were injected intraperitoneally with glucagon (100 µg/kg) for another 4 hr. Then mice were sacrificed and liver tissues were collected for genes expression analysis.



**Supplementary Figure 4.** Body weight (*A*) and food intake (*B*) in *db/db* mice as indicated. After a 24 hr fast, mice were sacrificed at day 12 after virus injection. Body weight was recorded (*A*). Food intake was recorded daily from day 8 to day 10 under fed condition (*B*).

