

SUPPLEMENTARY DATA

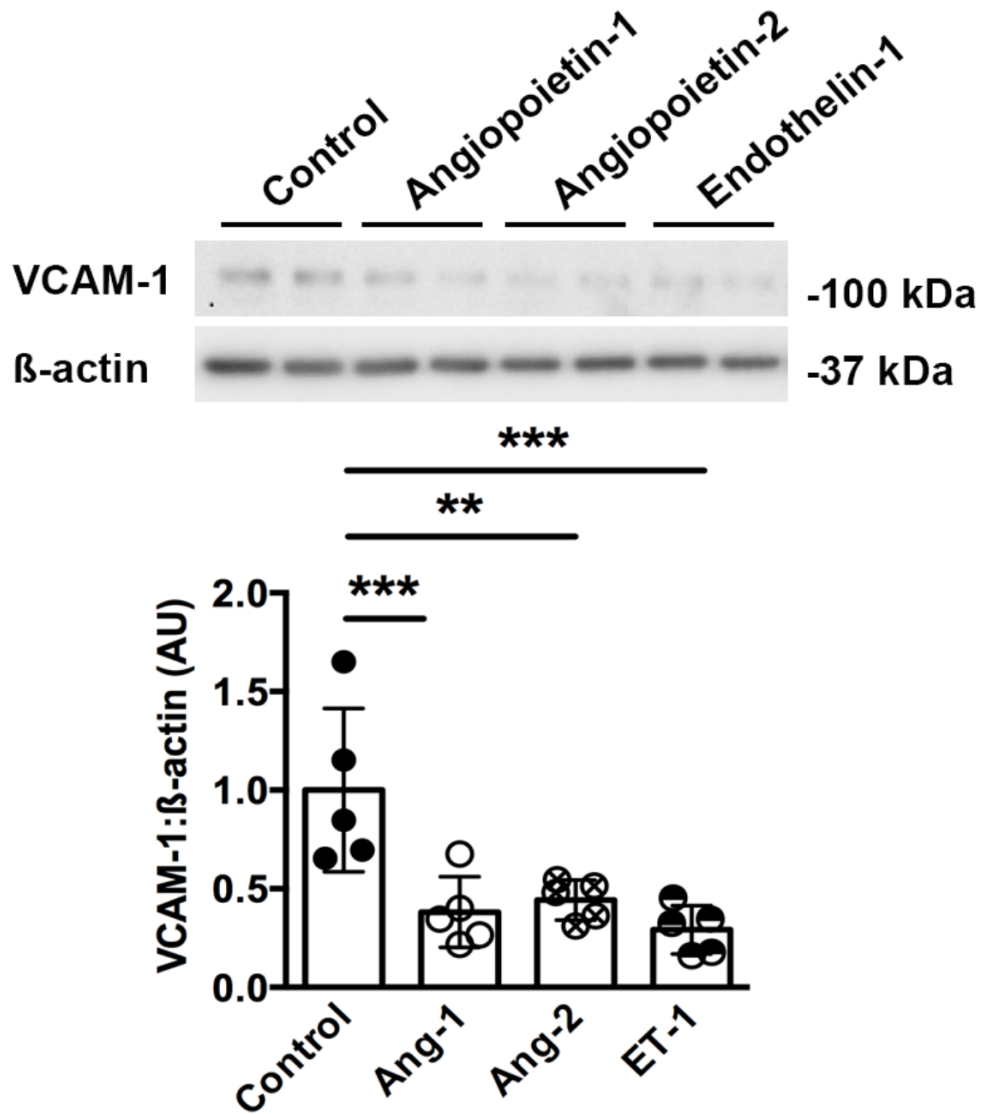
Supplementary Table 1. Functional characteristics of control and streptozotocin-diabetic (STZ) wildtype (WT) and endothelial nitric oxide synthase knockout (eNOS^{-/-}) mice.

	WT	STZ-WT	eNOS ^{-/-}	STZ-eNOS ^{-/-}
<i>N</i>	12	14	11	9
Body weight (g)	25±2	21±2 ^a	25±2 ^b	19±1 ^{acd}
Kidney weight (g)	0.16±0.02	0.16±0.02	0.13±0.01 ^{ef}	0.15±0.01 ^g
Kidney weight:body weight (%)	0.65±0.06	0.76±0.14 ^f	0.54±0.05 ^{dh}	0.81±0.07 ^{de}
Blood glucose (mmol/L)	9.0±1.7	22.6±5.4 ^a	9.9±1.6 ⁱ	27.6±5.2 ^{adf}
Urine albumin excretion (µg/24h)	12±4	66±56	45±39	665±188 ^{adi}

Values are mean ± S.D.. ^ap<0.0001 vs. WT, ^bp<0.001 vs. STZ-WT, ^cp<0.05 vs. STZ-WT, ^dp<0.0001 vs. eNOS^{-/-}, ^ep<0.001 vs. WT, ^fp<0.01 vs. STZ-WT, ^gp<0.05 vs. eNOS^{-/-}, ^hp<0.05 vs. WT, ⁱp<0.0001 vs. STZ-WT by 1-way ANOVA followed by Fisher least significant difference post hoc test.

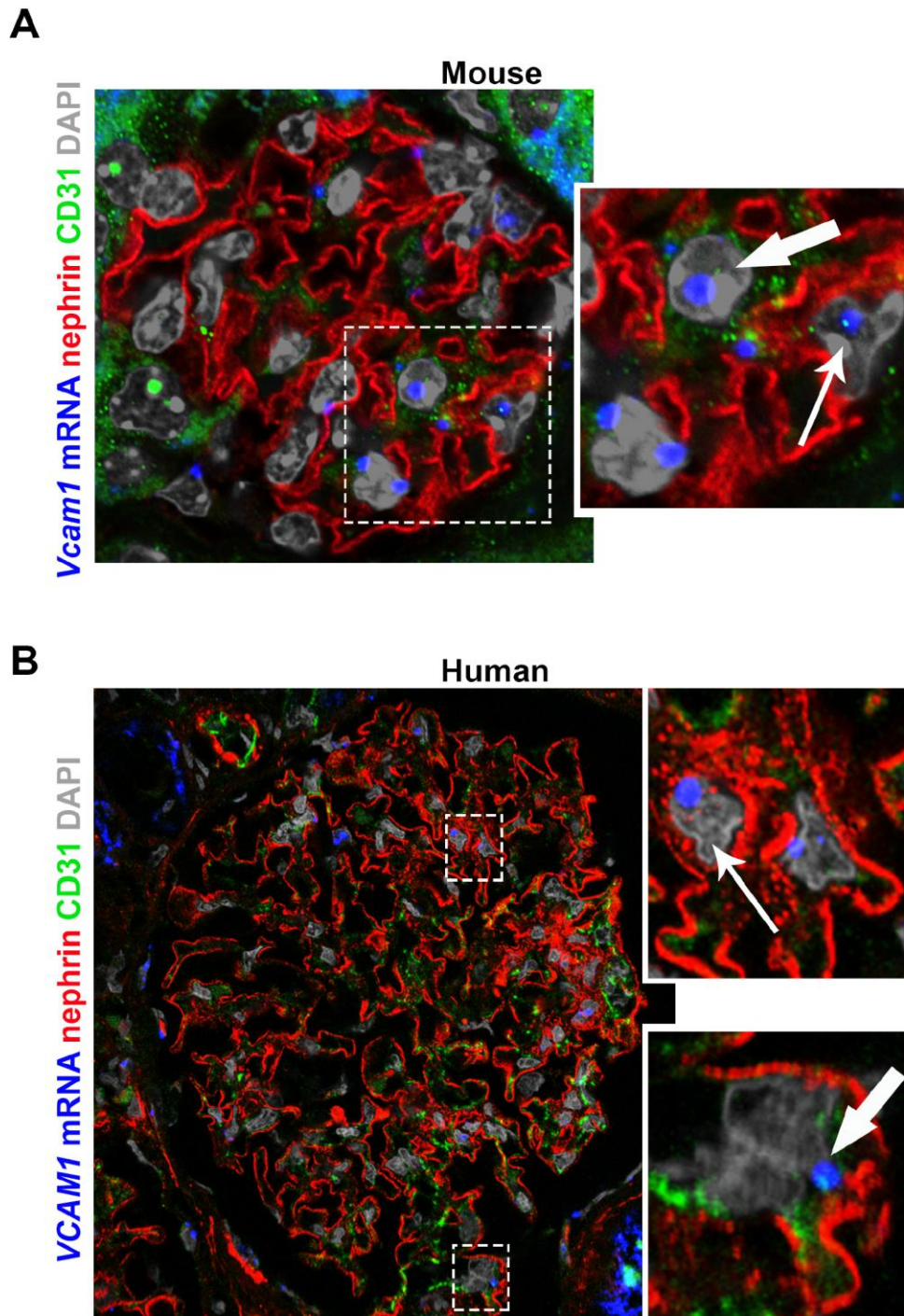
SUPPLEMENTARY DATA

Supplementary Figure 1. Immunoblotting hGECs for VCAM-1 under control conditions or following incubation with recombinant angiopoietin-1 (Ang-1; 100ng/ml), angiopoietin-2 (Ang-2; 100ng/ml) or endothelin-1 (ET-1; 10nM) for 16h (n=5/condition). AU = arbitrary units. Values are mean \pm S.D.. **p<0.01, ***p<0.001 by 1-way ANOVA followed by Fisher least significant difference post hoc test.



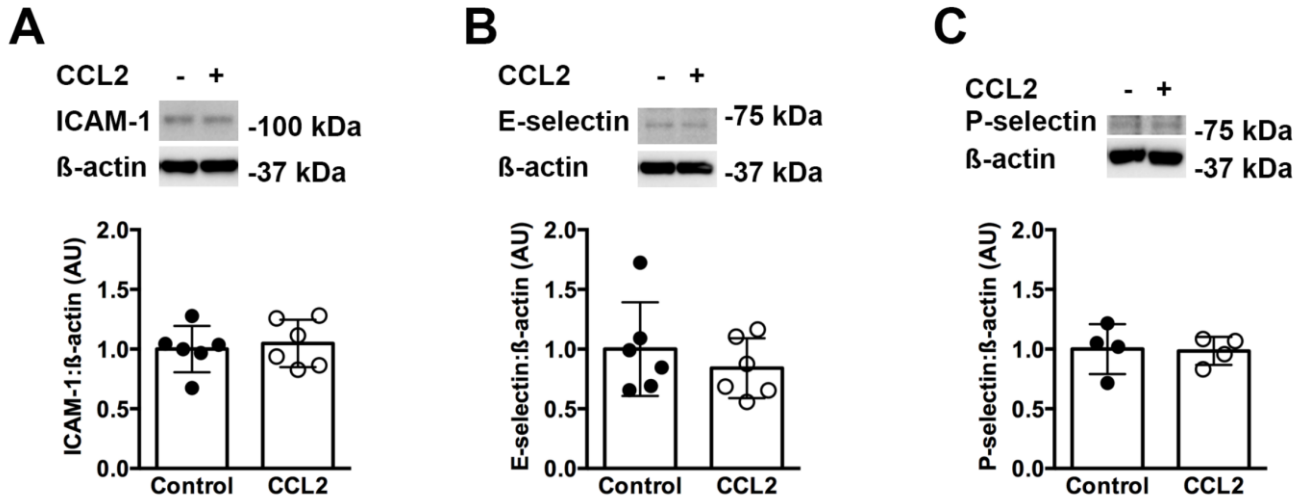
SUPPLEMENTARY DATA

Supplementary Figure 2. *In situ* hybridization for *VCAM1* (*Vcam1* in mouse) (blue) and immunostaining for nephrin (red) and CD31 (green) in mouse (A) and human (B) kidneys. Original images taken with a x63 optic. The zoomed images are enlargements of the boxed areas. The arrows label VCAM-1 transcript signals (blue puncta) in CD31-positive cells (thick arrows) and nephrin-positive cells (thin arrows).



SUPPLEMENTARY DATA

Supplementary Figure 3. Immunoblotting for ICAM-1, E-selectin and P-selectin in hGECs under control conditions or following incubation with recombinant CCL2 (0.5ng/ml) for 16h (ICAM-1 and E-selectin, n=6/condition; P-selectin, n=4/condition). AU = arbitrary units. Values are mean \pm S.D..



Supplementary Figure 4. qRT-PCR for miR-93 in hGECs under control conditions or following incubation with recombinant CCL2 (0.5ng/ml) for 16h (control, n=6; CCL2, n=5).

